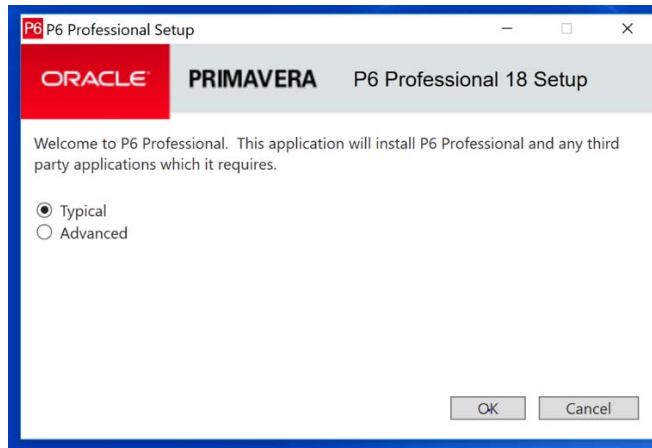


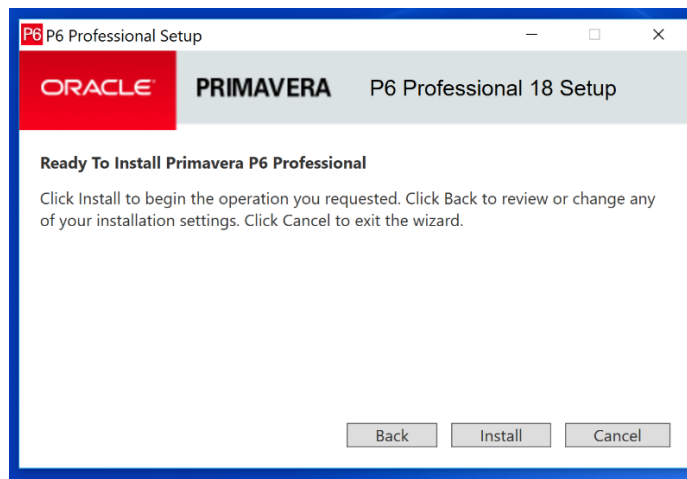
Primavera P6

Instructions for Downloading Primavera P6

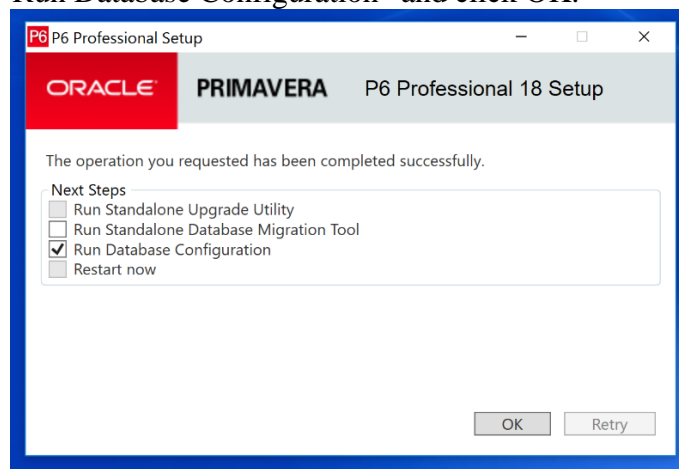
1. Find the “SETUP” application. Double click “Setup”.
2. Select the “Typical” installation. Click OK.



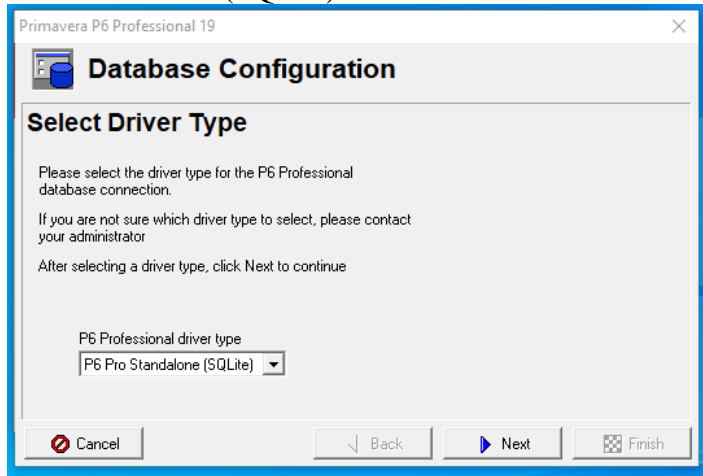
3. Click “Install”



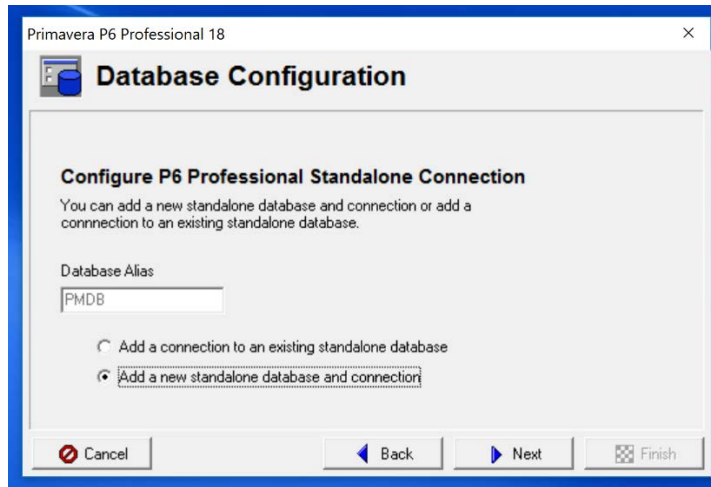
4. Click “Yes” to allow this app to make changes to your PC.
5. After installation, check “Run Database Configuration” and click OK.



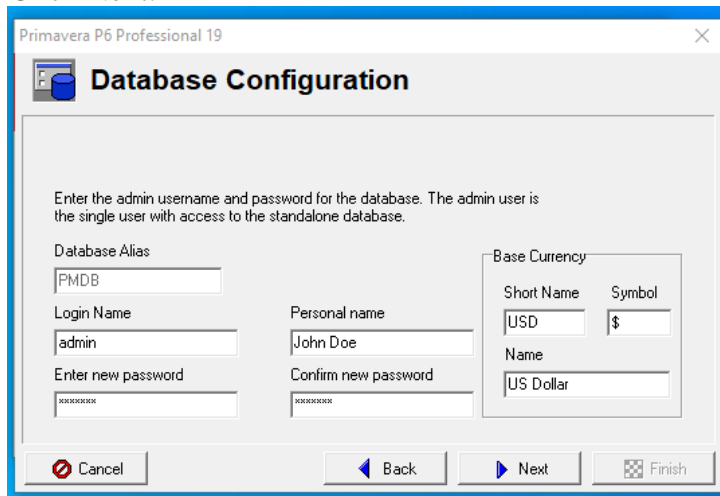
6. Select the driver type: P6 Pro Standalone (SQLite) and click Next



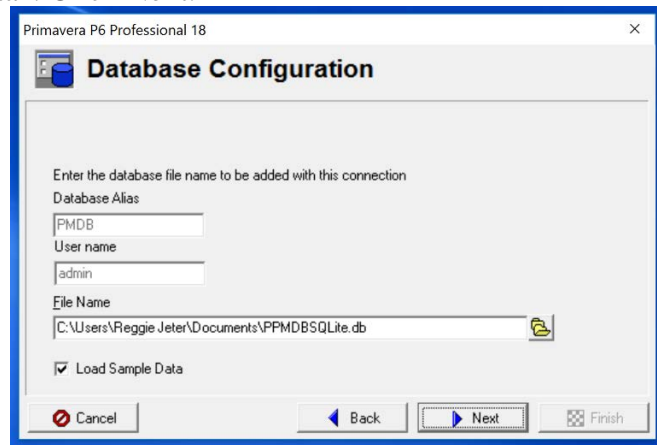
7. Use Database Alias = PMDB and check “Add a new standalone database and connection. Click Next.



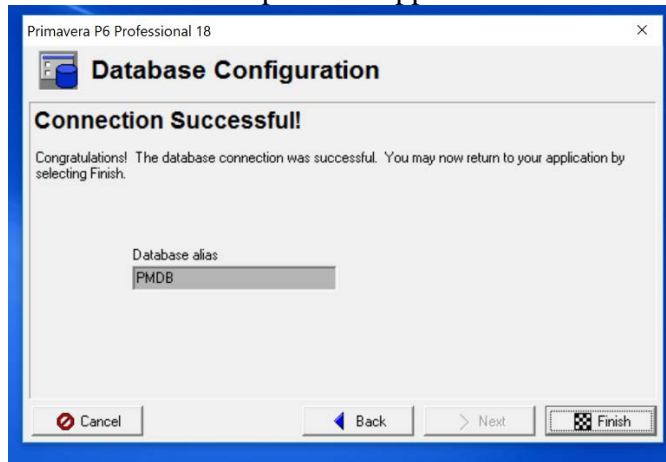
8. Login Name: - leave as admin; Personal name: put in your name; Password: - use “Western” (enter and confirm this password). Click Next.



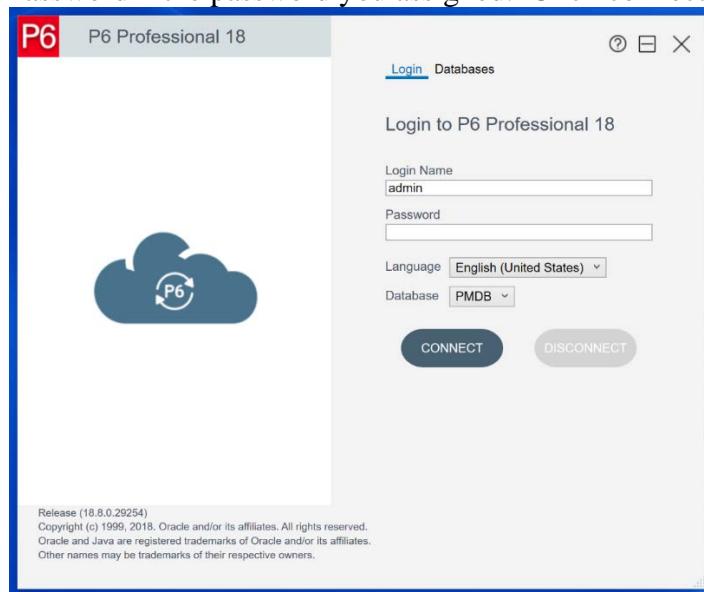
9. File Name: you can select the location for the database if you prefer.
Check: “Load Sample Data”. Click Next.



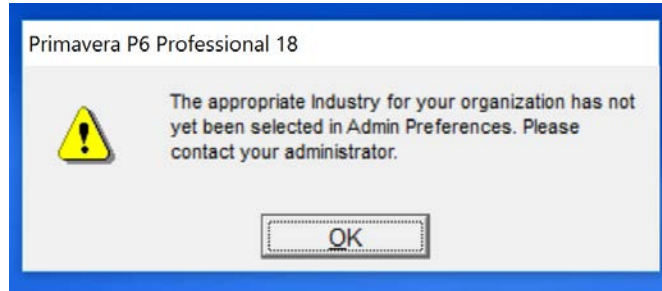
10. Click Finish. Once you click “Finish” the setup will disappear.



11. To find P6 click the Windows icon in the lower left corner of your computer screen.
12. Scroll down to Oracle – Primavera P6
13. Expand this section
14. Select P6 Professional 19 (x64). This will open P6
15. Login Name = admin; Password = the password you assigned. Click connect



Steps to Eliminate Error Message



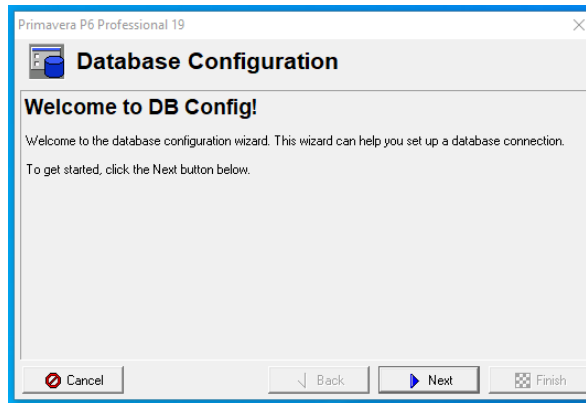
This message will appear the first time you enter P6.

1. When P6 is running, click the Admin tab at the top of the screen.
2. Click on the Admin Preferences tab
3. Click on the Industry tab
4. Check Engineering and Construction
5. Click "Close"
6. Click "OK"

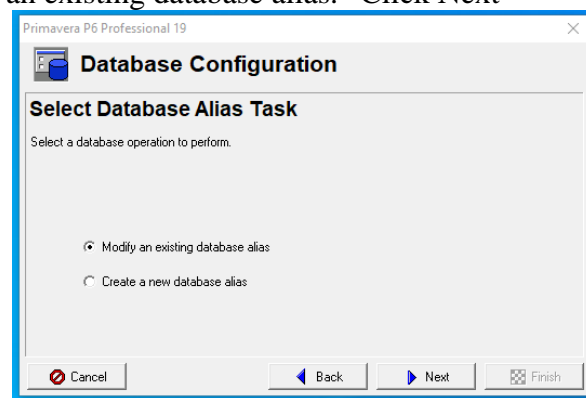
New User on a Computer with P6

When you login to a computer you have not used P6 on before the database will not recognize you. You must go through the Database configuration tool. Follow these steps to do this:

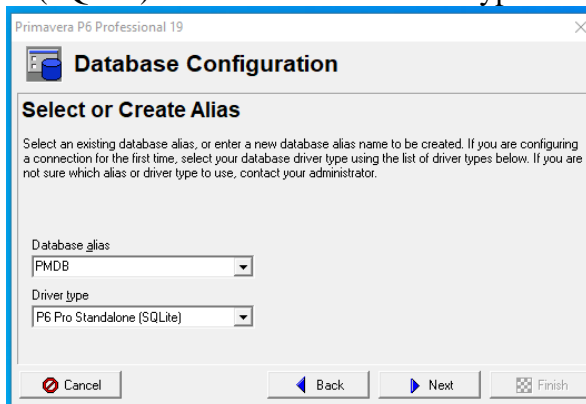
1. To find P6 Database Configuration click the Windows icon in the lower left corner of your computer screen.
2. Scroll down to Oracle – Primavera P6
3. Expand this section
4. Select Database Configuration 19 (64). This will open the Database setup tool
5. Click Next to setup a new database.



6. Select the option to “Modify an existing database alias.” Click Next



7. Be sure that P6 Pro Standalone (SQLite) is selected in the Driver type. Click Next.



8. Go to page 3 and continue using step 7 to finish the database.