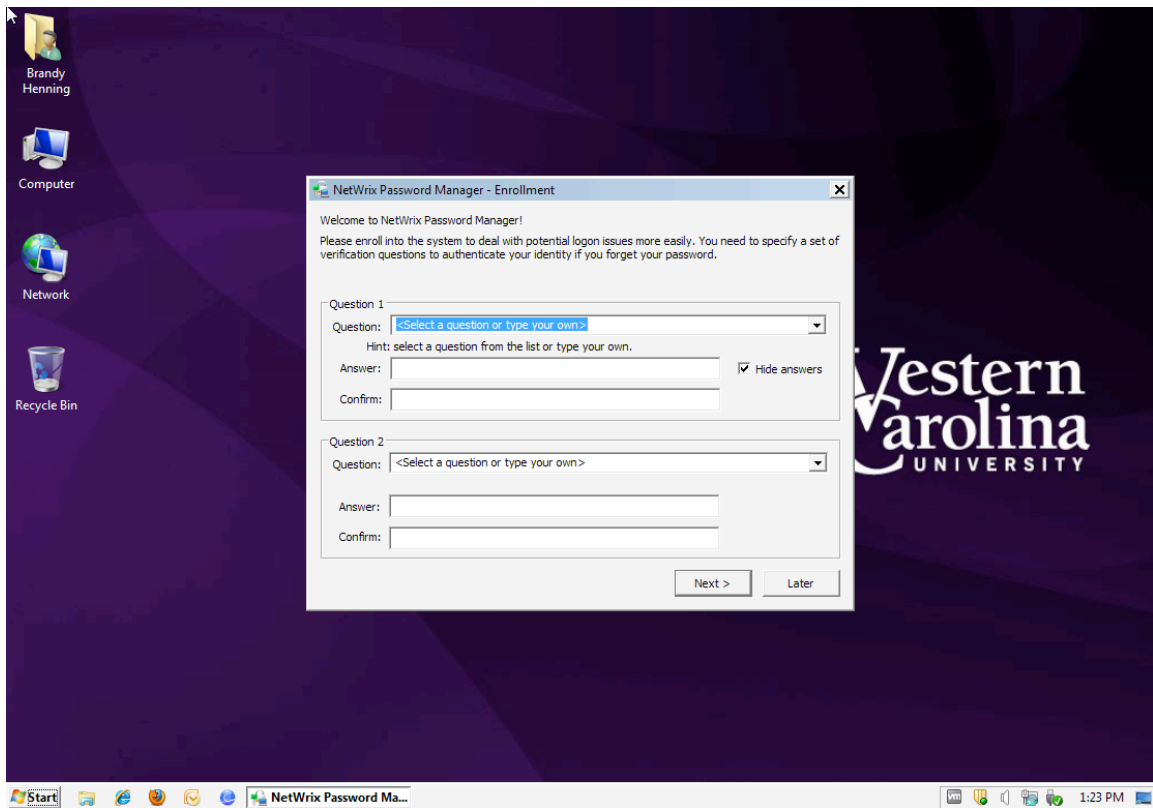


## Win 7 Screen Shots

1. The first change after the update will be the login page. In the picture below you will see a blue arrow where the change has been made.



- The next change you will see is the NetWrix Password Manager Enrollment dialog box. Here you will need to pick 4 security questions and answer them. This will enable you to reset your password incase you forget it or it gets locked out with out having to call the helpdesk. Below is a screen shot of the box that will come up when you log into your computer after the software is pushed to your computer.



3. After you enter your 4 security questions you should see a Thank You box letting you know the process was successfully. Here is that screen shot.

