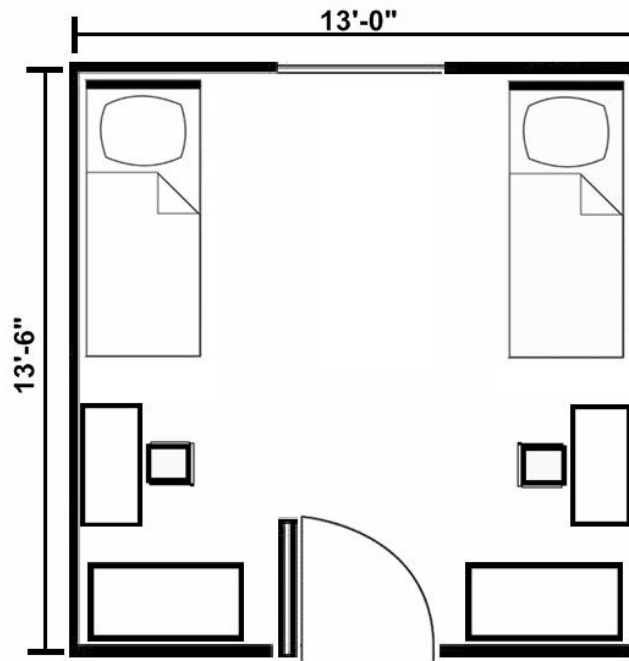


Albright/Benton

- 2 moveable 2-drawer wardrobes
- 2 moveable desks & chairs
- 2 twin XL loftable beds



Albright and Benton are non-smoking buildings joined by a common breezeway with a large multipurpose room. Both buildings are co-ed by floor with each building holding approximately 200 students. Wireless access is available, kitchen located in the lobby. There are four floors per wing and each floor accommodates 50 students who share two large bathrooms and a study area. Both buildings offers 24-hour visitation with roommate agreement. This residence hall is located next to Harrill Hall.

Please note: This is an average layout of each room. The actual size will vary.

For more housing information, please visit our website at housing.wcu.edu.

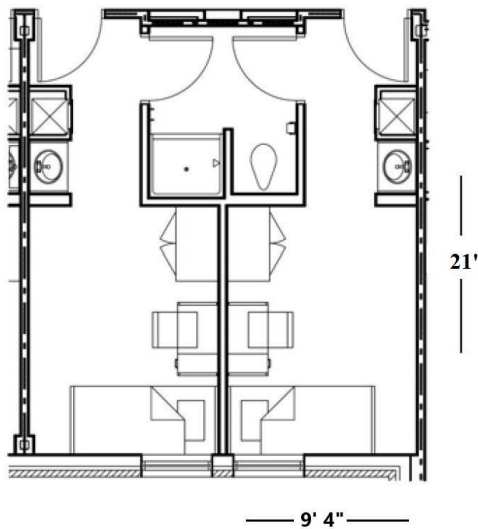
Allen Hall

Private Room

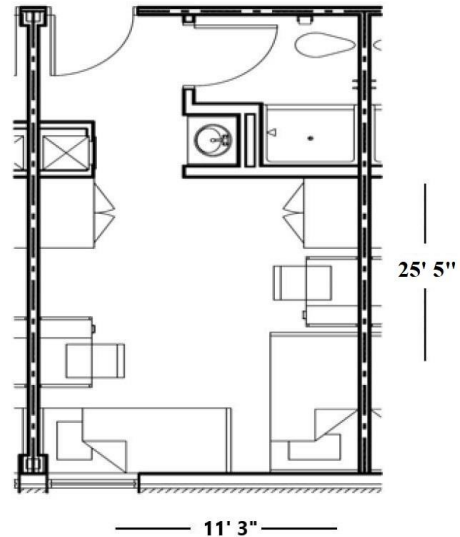
- 1 XL loftable twin bed
- 1 moveable desk
- 1 desk chair
- 1 moveable wardrobe with two drawers

Double Room

- 2 XL loftable twin beds
- 2 moveable desks
- 2 desk chairs
- 2 moveable wardrobes with two drawers



two private rooms shown



Allen Hall houses approximately 614 students. Allen Hall is co-ed by bath, non-smoking, air-conditioned and has 24-hour visitation with a roommate agreement. Sinks are located in the rooms. Wireless access is available. The building consists of private and double rooms. Allen Hall has common breezeways. Kitchens and laundry rooms are located throughout the building. Studies and lounges are located on every floor.

Please note: This is an average layout of each room. The actual size will vary.

For more housing information, please visit our website at housing.wcu.edu.

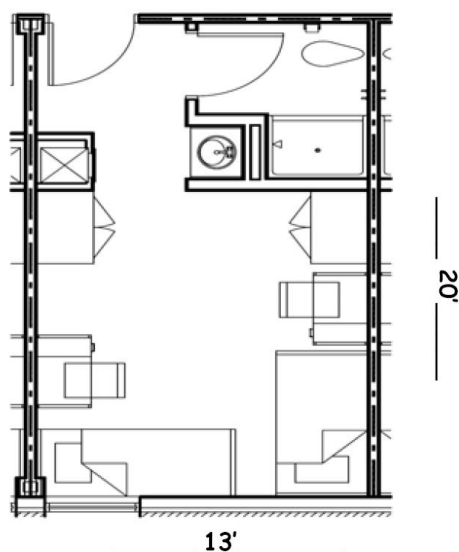
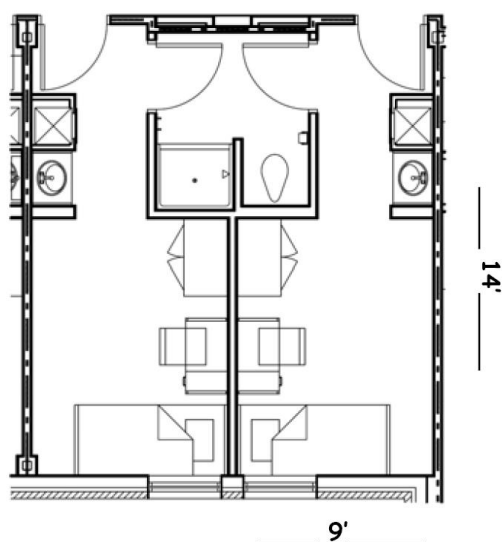
Balsam/Blue Ridge

Private Room

- 1 XL loftable twin bed
- 1 moveable desk
- 1 desk chair
- 1 moveable wardrobe with two drawers

Double Room

- 2 XL loftable twin beds
- 2 moveable desks
- 2 desk chairs
- 2 moveable wardrobes with two drawers



two private rooms shown

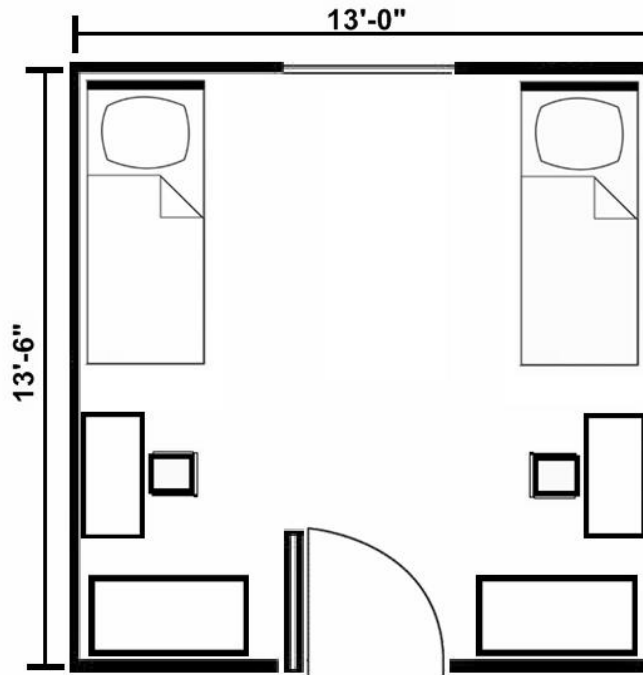
Balsam Hall houses approximately 426 students and **Blue Ridge** houses approximately 376 students. The buildings are joined together by a breezeway. Both halls are co-ed by bath, non-smoking, air conditioned and have 24-hour visitation with roommate agreement. Sinks are located in the rooms. Wireless access is available. The buildings consist of private and double rooms. Each floor has two community kitchens, common living room/lounge and two studies. Balsam Hall houses Honor's College students. Blue Ridge has a large multipurpose room on the first floor. Blue Ridge provides housing for Honor's College students, however, any remaining spaces will be available to general students.

Please note: This is an average layout of each room. The actual size will vary.

For more housing information, please visit our website at housing.wcu.edu.

Buchanan

- 1 moveable chest
- 2 moveable wardrobes
- 2 moveable desks & chairs
- 2 XL twin loftable beds



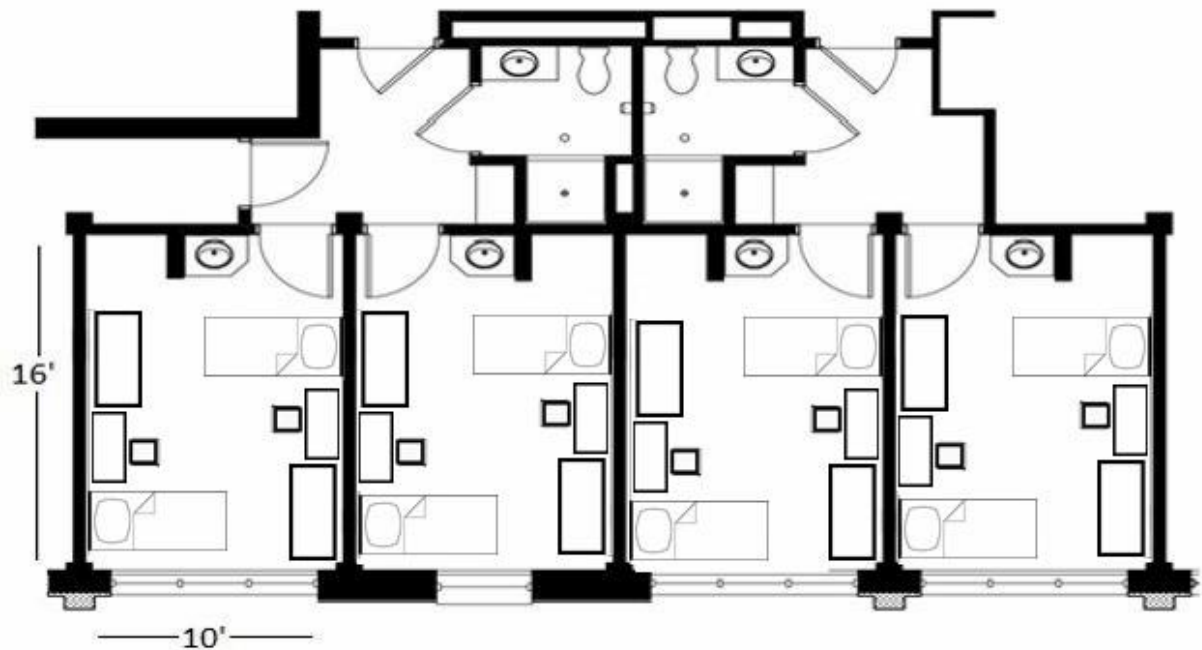
Buchanan is a non-smoking building designed to house approximately 200 students. The residents share common baths, laundry facilities, and study rooms. Wireless access is available. Buchanan offers 24-hour visitation with roommate agreement and is located in the older section of campus below Reynolds Hall.

Please note: This is an average layout of each room. The actual size will vary.

For more housing information, please visit our website at housing.wcu.edu.

Harrill

2 moveable desks & chairs
2 moveable wardrobes
2 XL loftable twin beds



4 double rooms shown

Harrill is a non-smoking, air-conditioned, high-rise residence hall. Harrill houses approximately 350 men and women. The building is nine stories high and has a large lobby on the first floor. Wireless access is available. Harrill offers 24-hour visitation with roommate agreement. Community kitchens are located on every floor, study rooms are located on every even floor and laundry facilities are located on every odd floor. Every two rooms share a common bath with sinks located in the rooms.

Please note: This is an average layout of each room. The actual size will vary.

For more housing information, please visit our website at housing.wcu.edu.

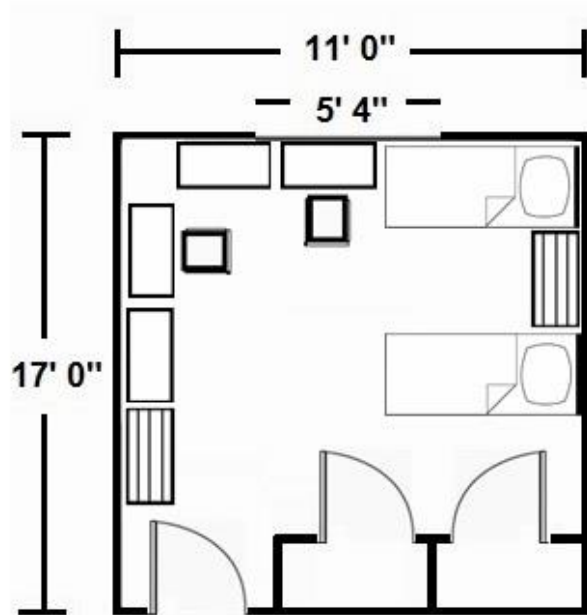
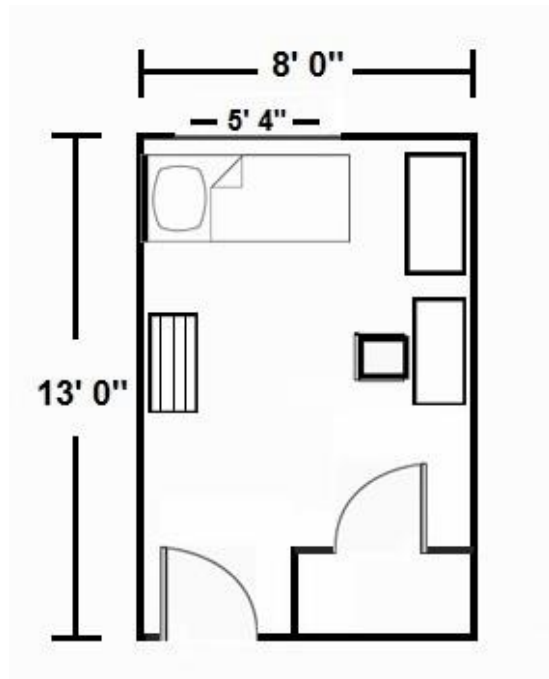
Judaculla

Private Room

- 1 XL loftable twin bed
- 1 moveable dresser
- 1 moveable desk
- 1 desk chair
- 1 bookshelf
- 1 closet

Double Room

- 2 XL loftable twin beds
- 2 moveable dresser
- 2 moveable desk
- 2 desk chairs
- 2 bookshelves
- 2 closets



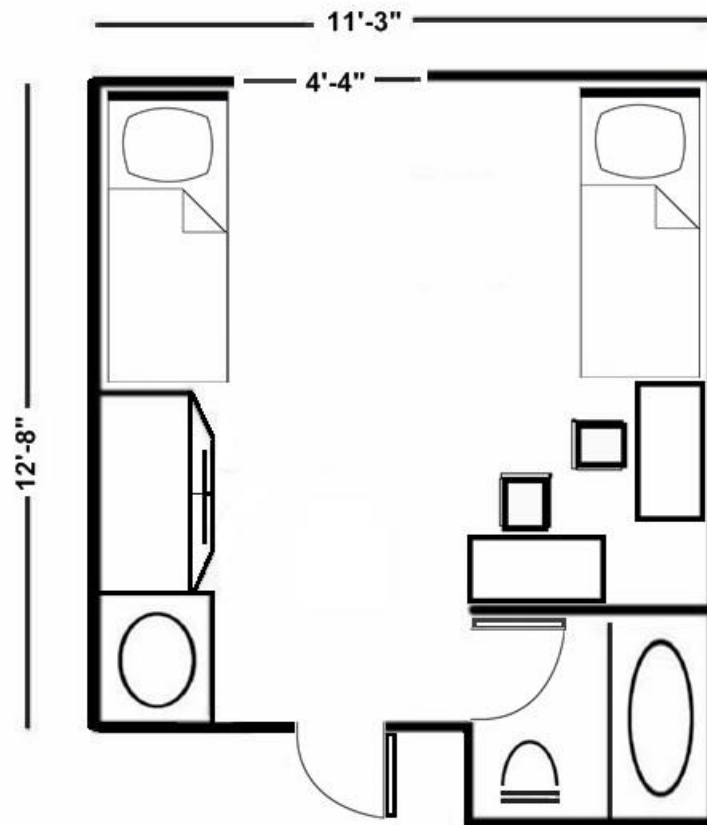
Judaculla Hall is completely non-smoking and houses approximately 300 students. This hall is air-conditioned, co-ed by suite, and has 24-hour visitation with roommate agreement. Wireless access is available. The suites consist of four private rooms or two privates and one double. Each suite shares a common bathroom and living area.

Please note: This is an average layout of each room. The actual size will vary.

For more housing information, please visit our website at housing.wcu.edu.

Madison

- 2 moveable desks
- 2 twin or full beds
- 1 built-in wardrobe/dressers
- 2 desk chairs



Madison is located in the older section of campus. The fourth floor is reserved for Graduate students and the rest of the building is for undergraduate students. It is a co-ed hall that is non-smoking, and has 24-hour visitation with roommate agreement. Wireless access is available. Each room has its own bathroom. Bed size depends on room location.

Please note: This is an average layout of each room. The actual size will vary; picture shown is a double room only.

For more housing information, please visit our website at housing.wcu.edu.

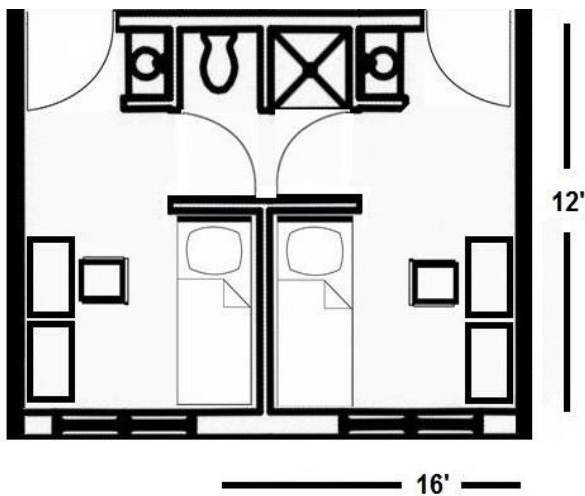
Noble Hall

Private Room

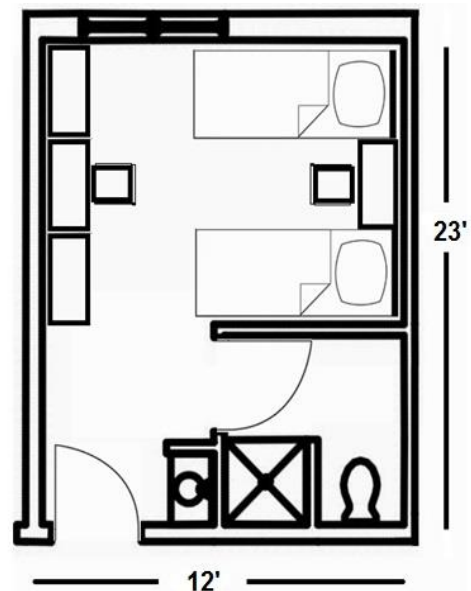
- 1 XL loftable twin bed
- 1 moveable desk
- 1 desk chair
- 1 moveable wardrobe with two drawers

Double Room

- 2 XL loftable twin beds
- 2 moveable desks
- 2 desk chairs
- 2 moveable wardrobes with two drawers



two private rooms sharing a bath shown



Noble Hall houses approximately 419 students. This hall is co-ed by bath, non-smoking, air conditioned and has 24-hour visitation with roommate agreement. Sinks are located in the rooms. Wireless access is available. The building consists of several room types including private rooms that share a bath, private rooms with their own bath and double rooms that have a private bath. Community kitchens, lounges and studies are located throughout the buildings. Laundry facilities are located on the third floor.

Please note: This is an average layout of each room. The actual size will vary.

For more housing information, please visit our website at housing.wcu.edu.

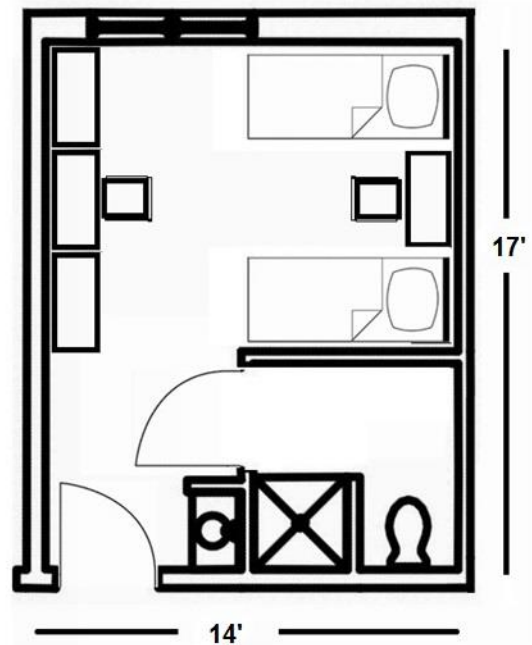
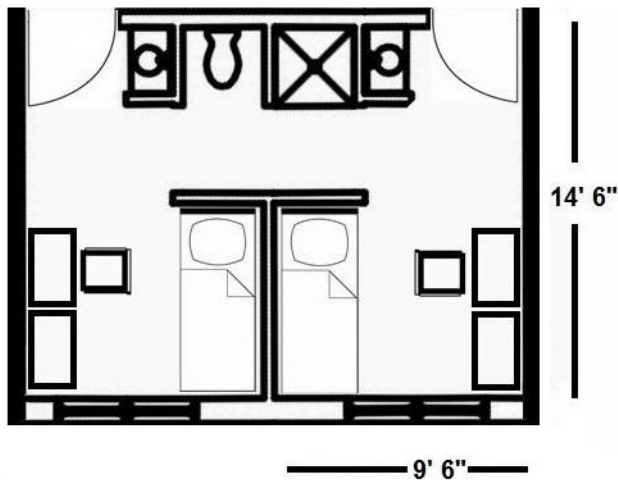
Norton Road

Private Room

- 1 XL loftable twin bed
- 1 moveable desk
- 1 desk chair
- 1 moveable wardrobe with three drawers

Double Room

- 2 XL loftable twin beds
- 2 moveable desks
- 2 desk chairs
- 2 moveable wardrobes with three drawers



two private rooms shown

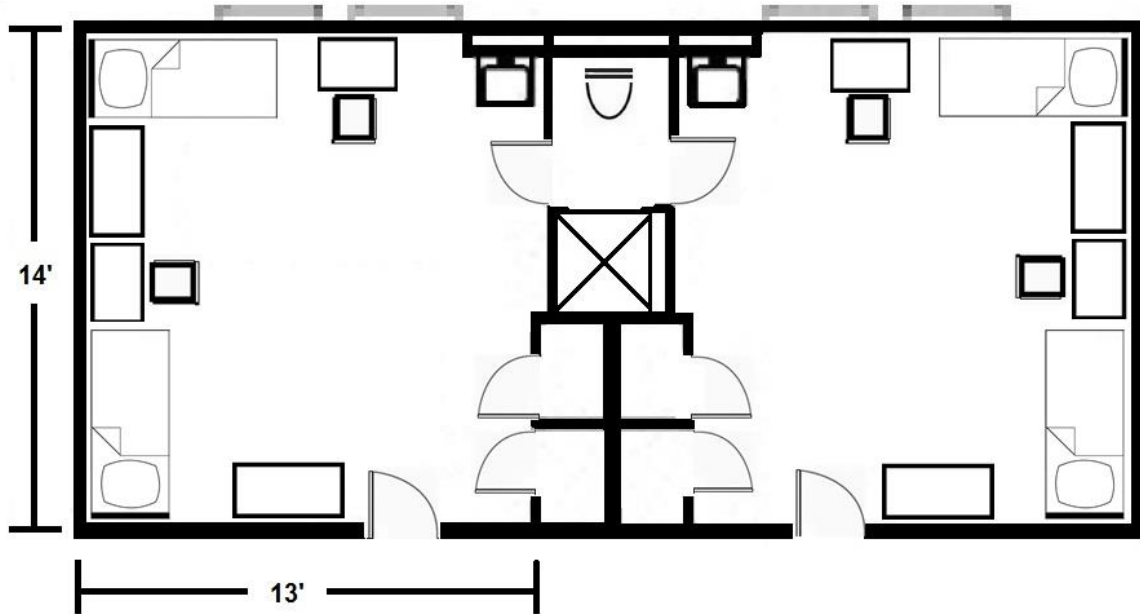
Norton Road Hall houses approximately 290 students. This hall is co-ed by bath, non-smoking, air conditioned and has 24-hour visitation with roommate agreement. Sinks are located in the rooms. Wireless access is available. The building consists of private and double rooms. Each wing has a community kitchen, common living room/lounge and study.

Please note: This is an average layout of each room. The actual size will vary.

For more housing information, please visit our website at housing.wcu.edu.

Reynolds

- 2 moveable chests
- 2 moveable desks
- 2 desk chairs
- 2 built-in closets
- 2 XL loftable twin beds



two double rooms shown

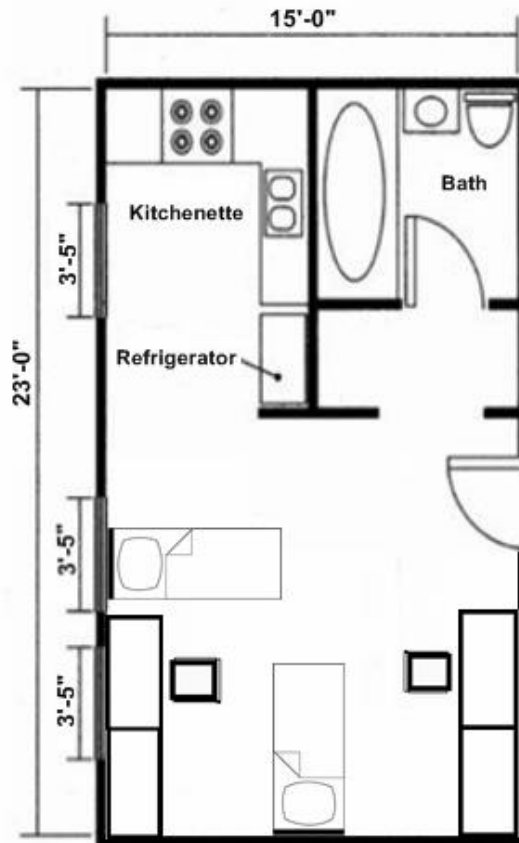
Reynolds is a non-smoking building located in the older section of campus. Reynolds houses approximately 300 men and women. The building is three stories high and has a large lobby on the first floor. One wing on the first floor of Reynolds is used to house first year Transfer students. Wireless access is available. Every two rooms share a common bath. Reynolds offers 24-hour visitation with roommate agreement, and is air conditioned. Residents share study rooms and laundry facilities.

Please note: This is an average layout of each room. The actual size will vary.

For more housing information, please visit our website at housing.wcu.edu.

Robertson

- 2 moveable chests
- 2 moveable desks & chairs
- 1 built-in closet
- 2 XL loftable twin beds



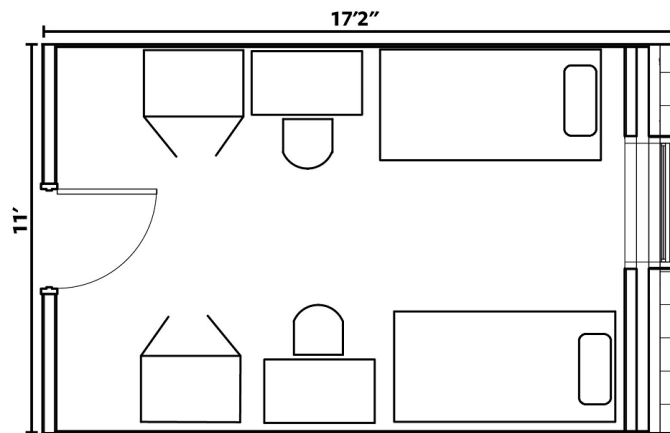
Robertson is a non-smoking, co-ed, apartment style residence hall located in the older section of campus. Each apartment houses two students and has its own kitchen and bathroom. Robertson has wireless access and offers 24-hour visitation with roommate agreement.

Please note: This is an average layout of each efficiency room. The actual size will vary.

For more housing information, please visit our website at housing.wcu.edu.

Black Rock, Water Rock, and Shining Rock

2 moveable chests
2 moveable desks & chairs
2 XL loftable twin beds



Designed for first-year student living, the buildings feature double occupancy rooms and community style bathrooms. The community style bathrooms have three enclosed toilets and three enclosed showers and a bank of four sinks. Generally, there are two bathrooms on each wing with about 20 students sharing each bathroom. In addition, there is a private restroom available on each floor that includes a shower, toilet and sink.

Black Rock Hall houses approximately 280 students. It features kitchens, laundry rooms and study rooms on 1st and 3rd floors. It also has a main floor lounge and lounges on floors 2, 3 and 4.

Water Rock Hall houses approximately 250 students. It features a large multipurpose room for community events. There are kitchens, laundry rooms and study rooms on 1st and 3rd floors, a main floor lounge and lounges on floors 2, 3 and 4.

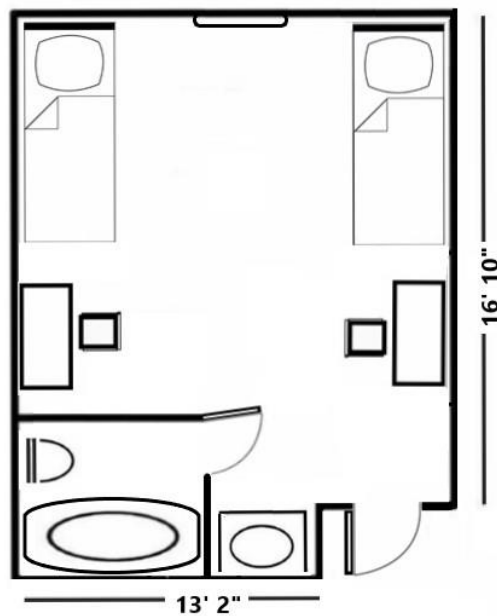
Shining Rock Hall houses approximately 370 students. It features kitchens on 1st and 4th floors, laundry rooms on 1st and 3rd floors, and a study room on 1st floor. It also has a main floor lounge and lounges on floors 2, 3, 4 and 5.

Please note: This is an average layout of each efficiency room. The actual size will vary.

For more housing information, please visit our website at housing.wcu.edu

The Village

2 XL loftable twin beds
2 moveable desks
2 desk chairs
2 moveable wardrobes



The Village houses approximately 252 students. This Village mainly houses Greek and University recognized student organizations and is made up of 17 houses ranging from 6 beds in a house to 20 beds in a house. Greek houses are single gender and other houses can be co-ed by bath. The Village is non-smoking, air-conditioned, and has 24-hour visitation with a roommate agreement. Sinks are located in the rooms. Wireless access is available. Each house has a kitchen and living room. Laundry facilities are located in the Commons Building.

Please note: This is an average layout of each room. The actual size will vary.

For more housing information, please visit our website at housing.wcu.edu.