



A career in nursing is challenging, rewarding and offers varied and exciting work environments. Now more than ever, nurses prepared at the baccalaureate and master's level are in great demand by health care employers. Our faculty are invested in nurturing students as they prepare for their roles as clinicians, teacher/educators, researchers, leaders, life-long learners, and responsible members of society.

The School of Nursing is approved by the North Carolina Board of Nursing and accredited by the Commission on Collegiate Nursing Education.

WESTERN CAROLINA UNIVERSITY COLLEGE OF HEALTH AND HUMAN SCIENCES

The College of Health and Human Sciences is committed to providing high quality educational programs for talented and motivated students. Our graduates are prepared in a dynamic learning environment that promotes inter-professional collaboration, evidence-based practice, scholarship and community engagement. Our expert faculty are passionate about their professions and facilitating a student-centered focus in the classroom. Great faculty, state-of-the-art resources and a beautiful mountain setting combine to provide an exceptional educational experience. We look forward to meeting you to talk about your future at Western Carolina University!

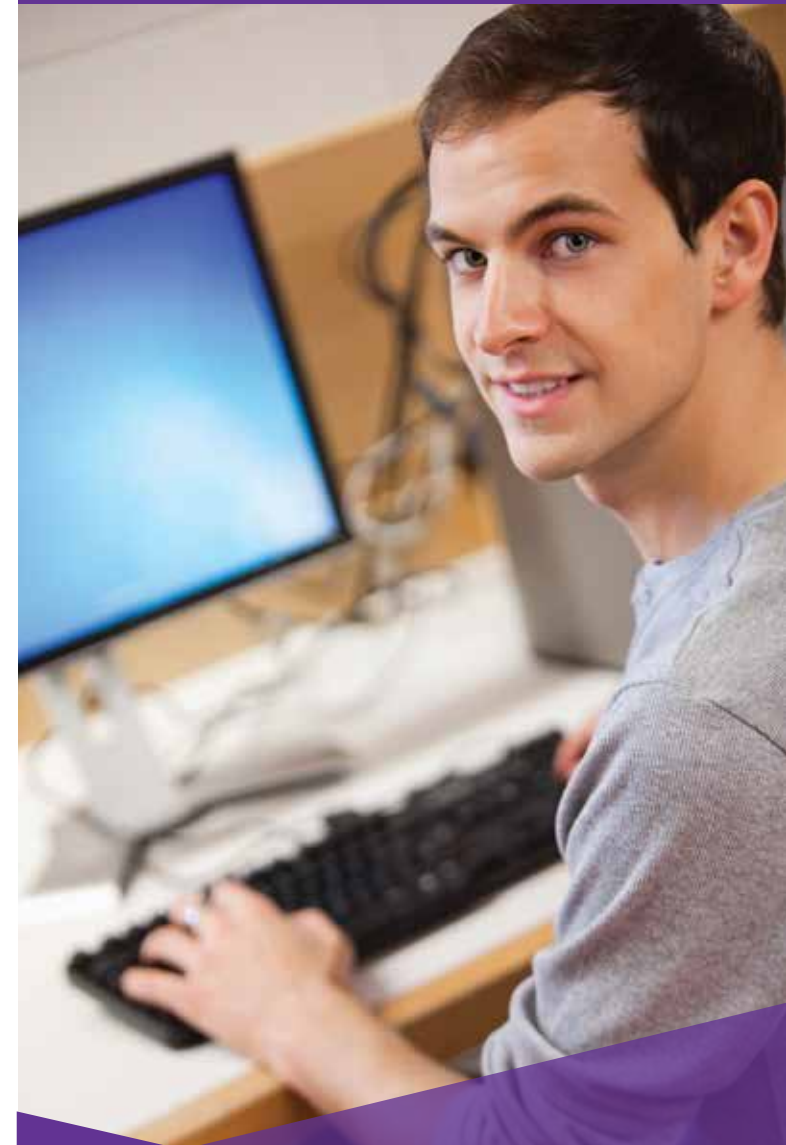
For more information about the RN to BSN Program email us at wcnursing@wcu.edu or visit the Program's website at rnbsn.wcu.edu



828.654.6499
RNBSN.WCU.EDU

WCU is a University of North Carolina campus and an Equal Opportunity Institution. 1,000 copies of this public document were printed at a cost of \$555.55 or \$.55 each. University Marketing / March 2016 / 15-600-4

ONLINE RN TO BSN PROGRAM



**Western
Carolina**
UNIVERSITY

College of Health
and Human Sciences

ONLINE RN TO BSN PROGRAM

The WCU online RN to BSN Program adds value to basic nursing education, broadens perspective of current clinical practice, enhances leadership potential, and prepares students for graduate study in nursing.

Students will complete 24 hours of online core Western Carolina University RN to BSN courses and six to eight hours of upper division online WCU electives on a part-time basis. The program can be completed in 4 semesters. Students are admitted twice a year and can begin the program in either January or August.

THE ADMISSION PROCESS

To determine admission eligibility, applicants have their transcripts reviewed by the RN to BSN Program Advisor prior to applying. To have your transcripts reviewed go to rnbsn.wcu.edu for the evaluation form and instructions. Please complete the Transcript Evaluation Request form and submit it to the Program Advisor along with a copy of each transcript from all previously attended community colleges and/or universities.

APPLICATION PROCESS

The Program Advisor will review your transcripts and confirm that all prerequisites have been satisfied.

1. Apply to the WCU Office of Admissions and send official transcripts of all previously attended community colleges and/or universities to the Office of Admission on the Cullowhee campus. Please note that acceptance to the university does not guarantee admission to the RN to BSN Program.
2. Apply to the RN to BSN Program. Include an additional set of official transcript copies from all previously attended community colleges and/or universities with the RN to BSN Application Packet.
3. If you have questions about the application process, admission prerequisites, eligibility or other program details please contact the Program Advisor.



PROGRAM ADMISSION REQUIREMENTS

- A current, unrestricted license to practice as an RN.
- The completion of all WCU Liberal Studies* and School of Nursing course prerequisites with a C or better.
- A cumulative undergraduate GPA of 2.5 or higher.
- The completion of 60 transferable non-nursing course hours.
- The submission of the WCU Office of Admissions online application and RN to BSN Program application packet by the application deadline.

**The WCU liberal studies requirement is waived for students who have an approved bachelor's degree, a North Carolina Community College Associate of Science or an Associate of Arts transfer degree. An Associate of Applied Science in Nursing Degree (ADN) does not waive this requirement.*

PROGRAM DESCRIPTION

The online RN to BSN required courses are laid out in four six-hour blocks.

Introductory Block:

Must be taken as the first block alone or with electives

- | | |
|-----------|-------------------------------------|
| NSG 301 | Professional Transitions in Nursing |
| NSG 398 | APA Writing Style and Format |
| NSG 399** | Clinical Update for RNs |

Community Health Block:

May be taken as the second or third block

- | | |
|---------|---|
| NSG 302 | Community Health Nursing I: Theory |
| NSG 305 | Comm. Health Nursing, III: Intervention Project |
| NSG 384 | Community Health Nursing II: Practicum |

Leadership Block:

May be taken as the second or third block

- | | |
|---------|--|
| NSG 460 | Nursing Leadership I: Theory |
| NSG 483 | Nursing Leadership II: Practicum |
| NSG 484 | Nursing Leadership III: Intervention Project |

Research Block:

Should be taken as the final block

- | | |
|---------|--|
| NSG 471 | Nursing Research I: Research Process |
| NSG 472 | Nursing Research II: Critical Reading |
| NSG 473 | Nursing Research III: Clinical Application |

ELECTIVES

Six to eight hours of upper-division (300-400 level) electives taken at WCU complete the program. Online electives are available in social work, philosophy and religion, anthropology, health sciences, law, nursing and other disciplines that appeal to students' needs and interests. Electives may be taken along with the RN to BSN blocks.

***Upon successful completion of NSG 399, students receive 30 hours of credit for their previous nursing coursework.*