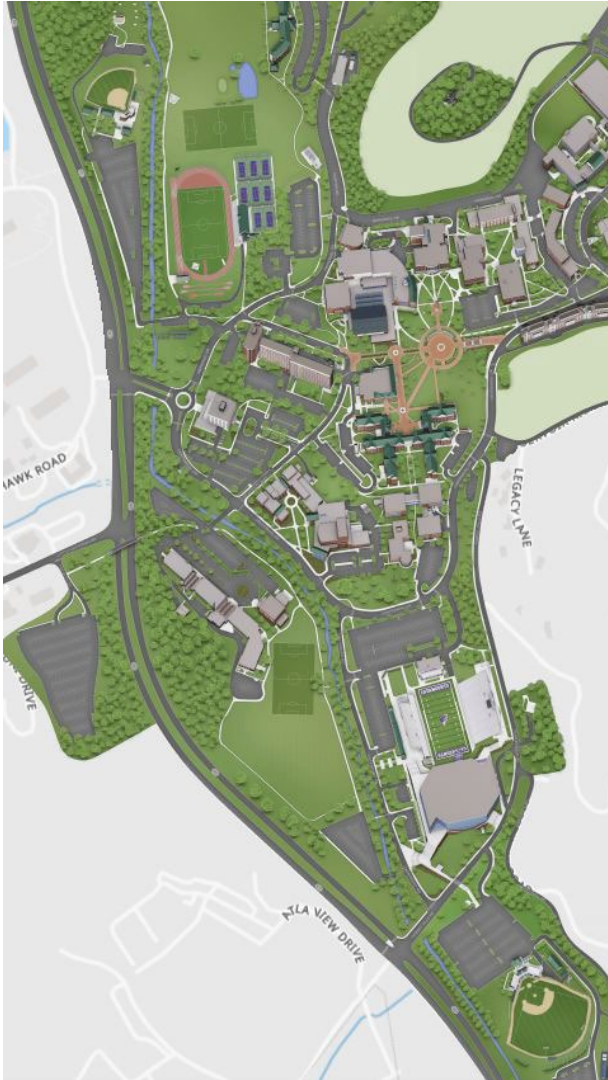


Primary Athletic Facility Priorities



- Strength & Conditioning Center
- Sports Medicine Suite
- Athletics Equipment
- Academic Center for Student-Athletes
- Premium Space
- New Press Box
- Football Locker Room
- Large, Full Team Meeting Room
- Coaches Offices
- Meeting Rooms/Gameday Suites
- Ramsey Renovations
- E.J. Whitmire Stadium East
- Field Sports Complex

Camp Gymnasium - 1963



Includes

- Coaches Offices for:
 - Women's Softball
 - Women's Tennis
 - Women's Soccer
 - M/W Track & Cross Country
- M/W Golf Simulators
- M/W Track Locker Rooms
- Undersized Sports Medicine Space

Engineering Plan Feedback (2014)

- Building in floodplain and floodway zones
- Deterioration of flooring due to lack of moisture protection
- Replacement of single ply adhered roof
- Address masonry and joint deterioration due to settlement
- Replacement of exterior soffits
- Replacement of original single glaze steel windows
- Electrical, Mechanical, Plumbing systems beyond useful life

Other Issues

- Not located near practice and competition fields
- Unimpressive and hurtful to recruiting prospective student-athletes
- Not enough office space for coaches

Jordan-Phillips Fieldhouse - 1974



Includes

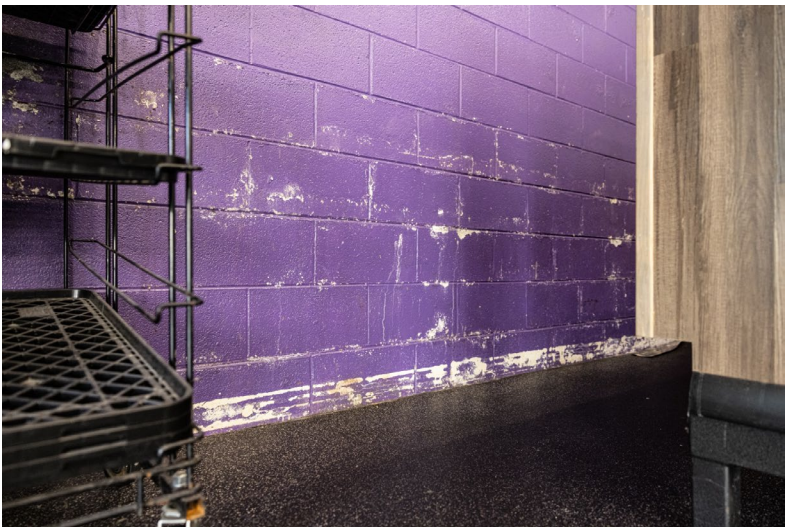
- Home to Catamount Athletics:
 - Strength and Conditioning
 - Academic Services
 - M/W Golf Coaches Offices

Engineering Plan Feedback (2014)

- Replacement of single ply adhered roof
- Aside from main entrance and elevator, no ADA compliance
- No emergency and egress lighting to meet code
- Replacement of fire alarm system to meet current code
- Replacement of existing hot water boiler
- Underground fuel storage tank replacement
- Replacement of original single glaze aluminum windows
- Replacement of flooring finishes
- Electrical, Mechanical, and Plumbing systems beyond useful life (minus weight room addition)

Other Issues

- Nonexistent Team Meeting Space
- Inadequate study, storage, and strength and conditioning space
 - Issues with staff
 - Issues with class scheduling



EJ Whitmire Stadium - 1974



Includes

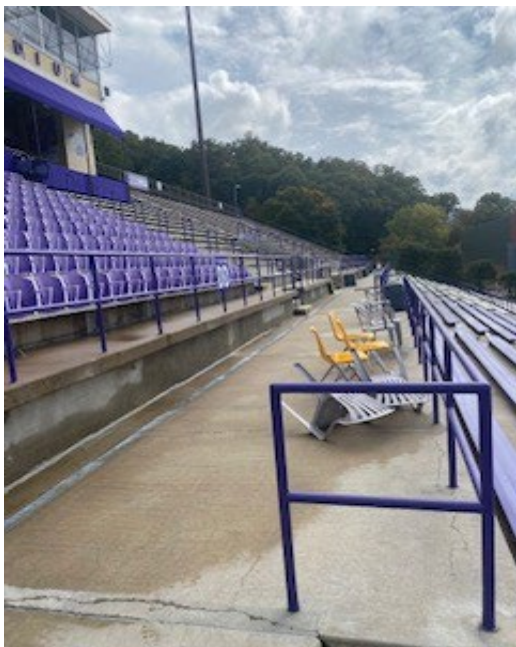
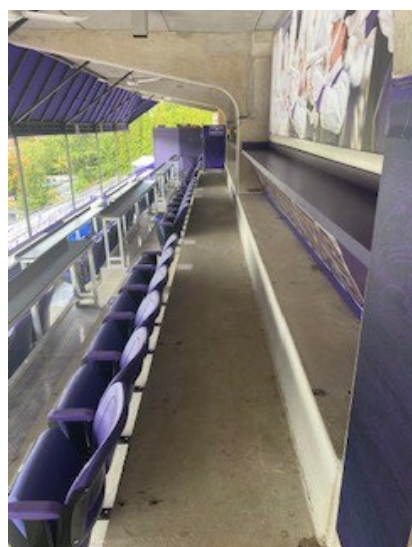
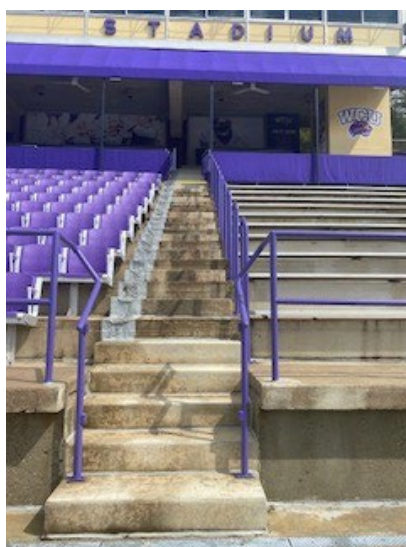
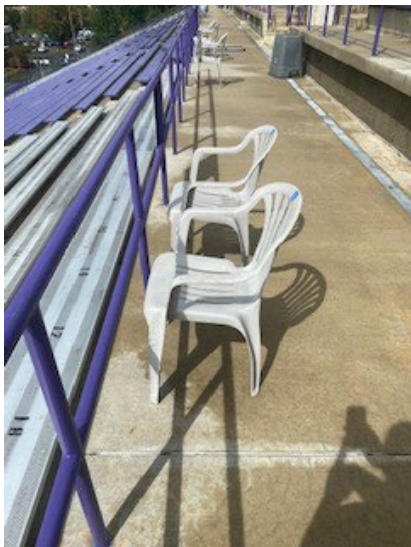
- Press box for football operations
- Chancellor's Box
- Concessions
- Restrooms
- Spectator Seating

Engineering Report Feedback (2014)

- Replacement of all concrete expansion joint seals
- Replacement of all concrete sealants in joints of elevated seating areas and slab grade
- Replacement of deteriorated grout blocks supporting double tees
- Corrosion of steel plate connections below double tees
- Repair of deteriorated concrete and areas of spalling
- Handrail replacement
- Replacement of all brick expansion control joints
- Press box not ADA compliant
- Roof drain leader from press box requires rerouting
- Stadium lighting replacement
- Electrical, Mechanical, and Plumbing systems beyond useful life

Other Issues

- Experience of press box staff on gameday
- Experience of Chancellor's Guests on gameday
- Ascetics for our campus (12k+ attendees)



Student-Athlete Wellness Areas

Sports Medicine Suite – Ramsey Center (1986)

- Serves approximately 190 student athletes daily
- Serves all student athletes for major rehabilitation
- Currently 1,952 square feet
- **American College of Sports Medicine** recommends 8,690 square feet for peak hours for treating 190 student-athletes

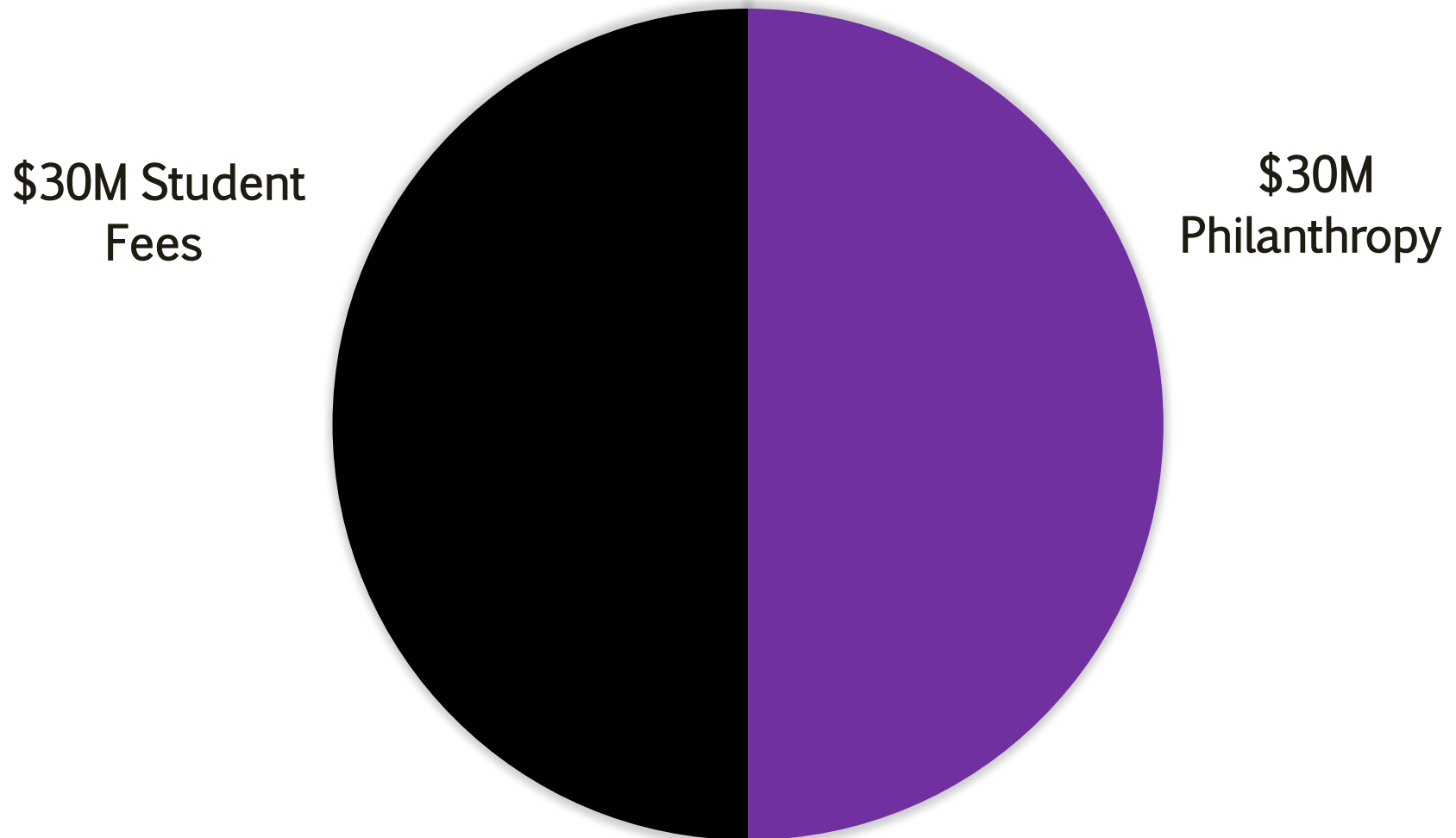
Strength & Conditioning – Field House (1974)

- Serves approximately 340 student athletes daily
- Currently 6,626 square feet, but broken into three separate rooms / areas
- **National Strength & Conditioning Association** recommends 9,600 square feet to train 100 student-athletes at same time

Student-Athlete Academic Support– Field House (1974)

- Serves approximately 200 student athletes daily
- Currently 3,645 square feet, but rooms not configured to provide best study environments
- 1 large group areas; 2 smaller group areas; 2 tutor rooms; 6 offices
 - 5,550 square feet

Project Funding Sources



Project Funding Sources

Financing Plan for \$30 million Debt for Athletic Facilities

Projected need per student to fund \$30 Million in Debt = \$273

Sources:

\$86 - Increased Athletic Fee in 2022. Currently generating cash used for design fees.

\$96 - Available under Debt Service Fee in 2024 as existing debt retires

\$91 - Proposed net increase in mandatory fees in 2024

\$273 - Total