

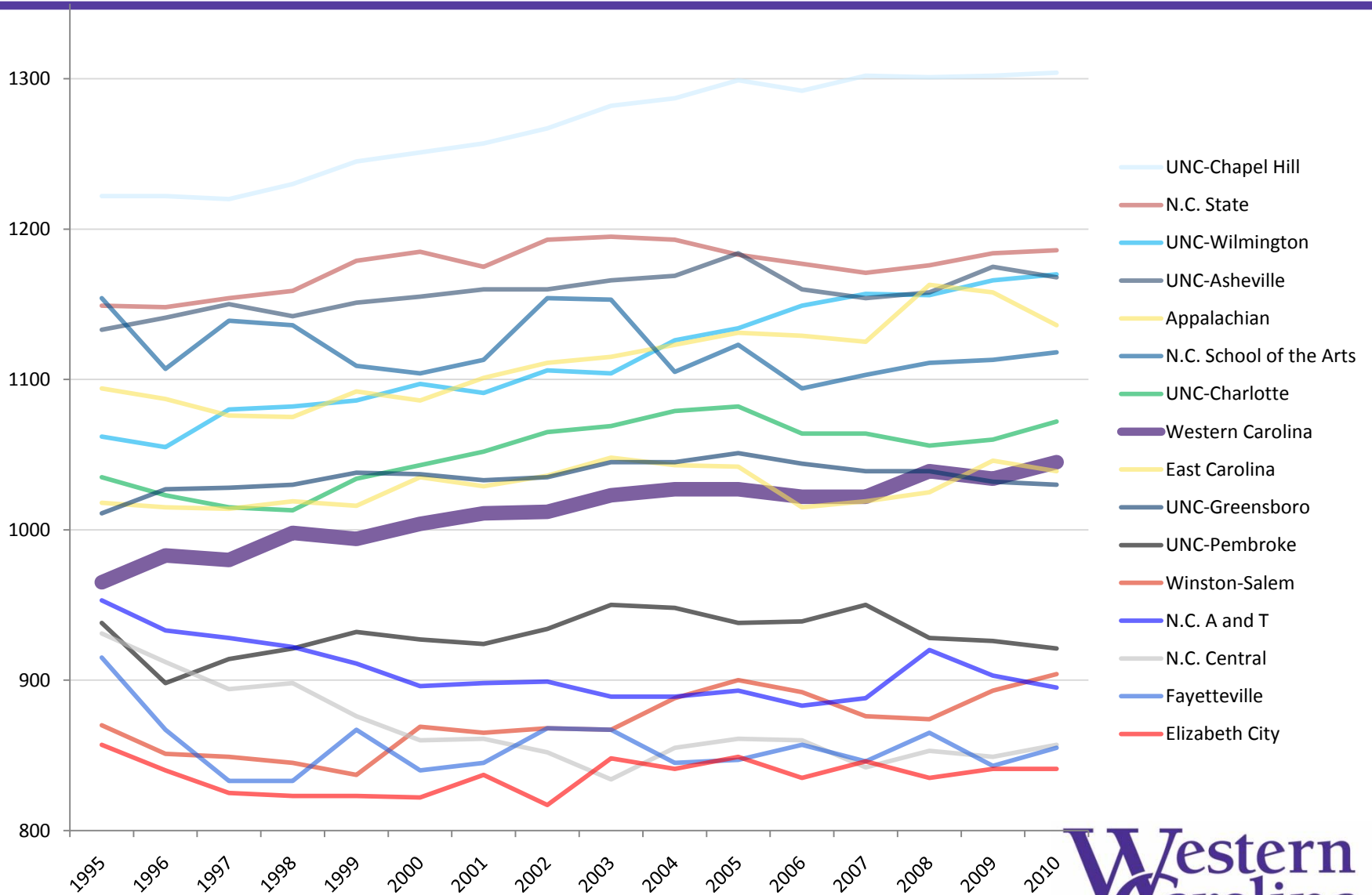


January 31, 2011

Official Statistics for Fall

- Enrollment was roughly stable at approximately 9,400
- Entering students had a record average SAT of 1045
- For the first time ever, WCU had a higher SAT than both UNCG and ECU
- Since 2000, the system SAT increased by 12 points; WCU's SAT increased by 41 points

Average SAT

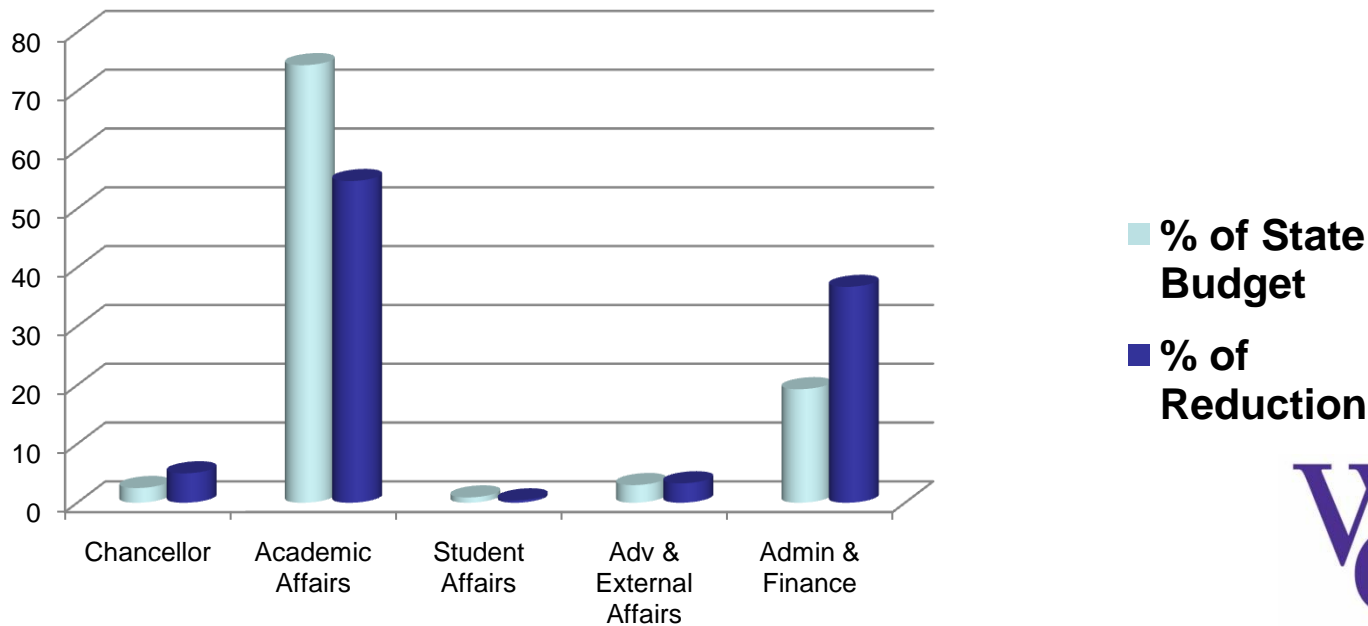


Budget

- The situation remains fluid. Estimates of the state's deficit now run from \$2.9 billion to \$3.7 billion
- We have had to return a total of 3.5 percent of this year's allocation in reversions. It is possible that there will be additional reversions
- We can expect a permanent reduction in the state budget. The amount of that reduction could run from 8 to 15 percent
- Tuition increases, if left on the campus, could reduce the impact of the cut. The legislature has not made that determination at this time
- We are planning as if tuition increases will remain on campus

FY 2008-2009

Division	% of State Budget	% of Reduction
Chancellor	2.5	5.0
Academic Affairs	74.3	54.6
Student Affairs	0.9	0.4
Adv. & Ext. Affairs	3.0	3.3
Admin. & Finance	19.3	36.7



To prepare for next year

- Begin preparing for a 10 percent reduction in state funding
- This is a "conservative estimate" based on what we are hearing today and the likelihood of additional reversions after the fiscal year begins
- Continue developing plans for reductions of up to 15 percent

Preferred actions

- Minimize layoffs where feasible
- Focus on reorganization and effective use of existing administrators
- Simplify curricula so that we maintain the strongest programs possible and, where possible, increase the quality of those basic programs by focusing resources
- Minimize utilities
- Look at alternative schedules for summer

Definition of the Academic Core:

- **The basic programs that we need to offer as a fully accredited regional university focused on UNC-Tomorrow and on those enabling activities that allow for the effective and efficient delivery of those core programs.**



Western Carolina University

State Budget Review

FY 2008-2009 and FY 2009-2010

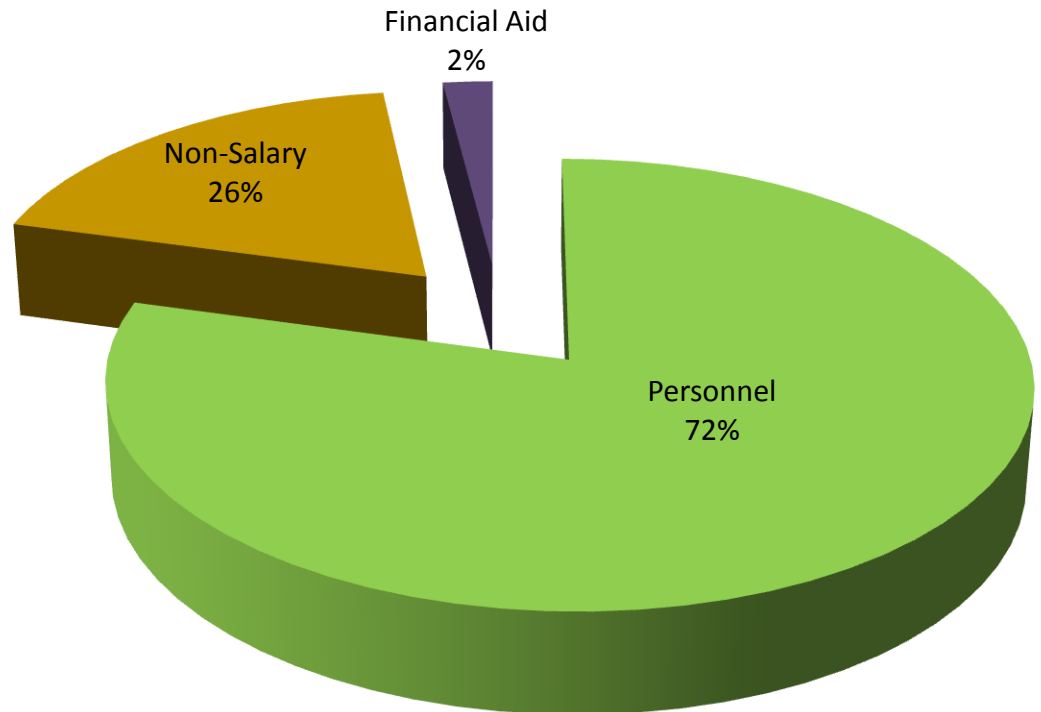
Western Carolina University
FY 2008-09 State Appropriated Budget
Expenditures as percentage of total requirements

Requirements: \$132,876,585

Personnel: \$ 96,247,339

Non-Salary: \$ 34,310,183

Financial Aid: \$ 2,319,063

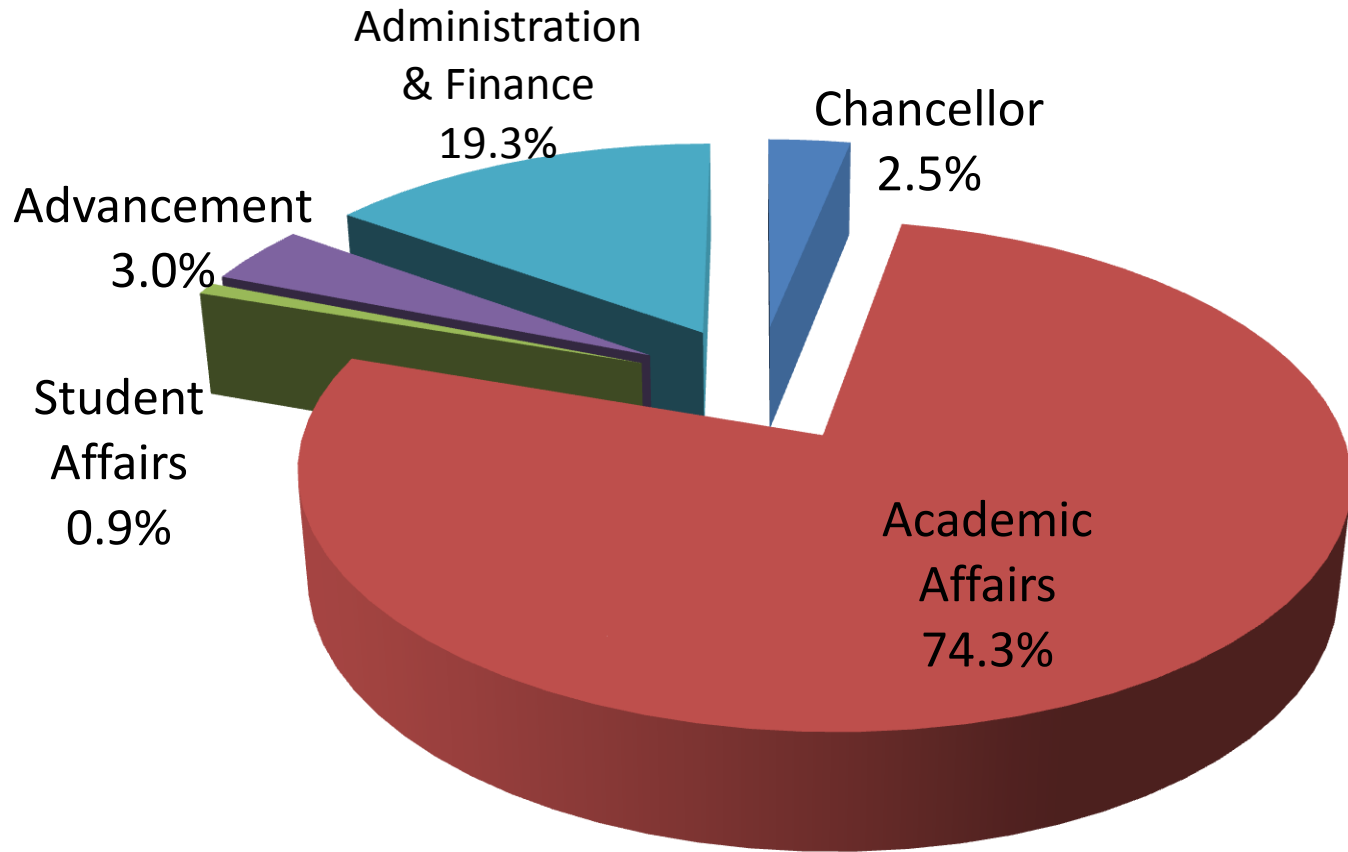


Western Carolina University
FY 2008-09 Budgeted Positions

EPA Faculty	618.87 FTE
EPA Non-Faculty	210.50 FTE
SPA Staff	661.40 FTE
Total	1,490.77 FTE

FY 2008-09

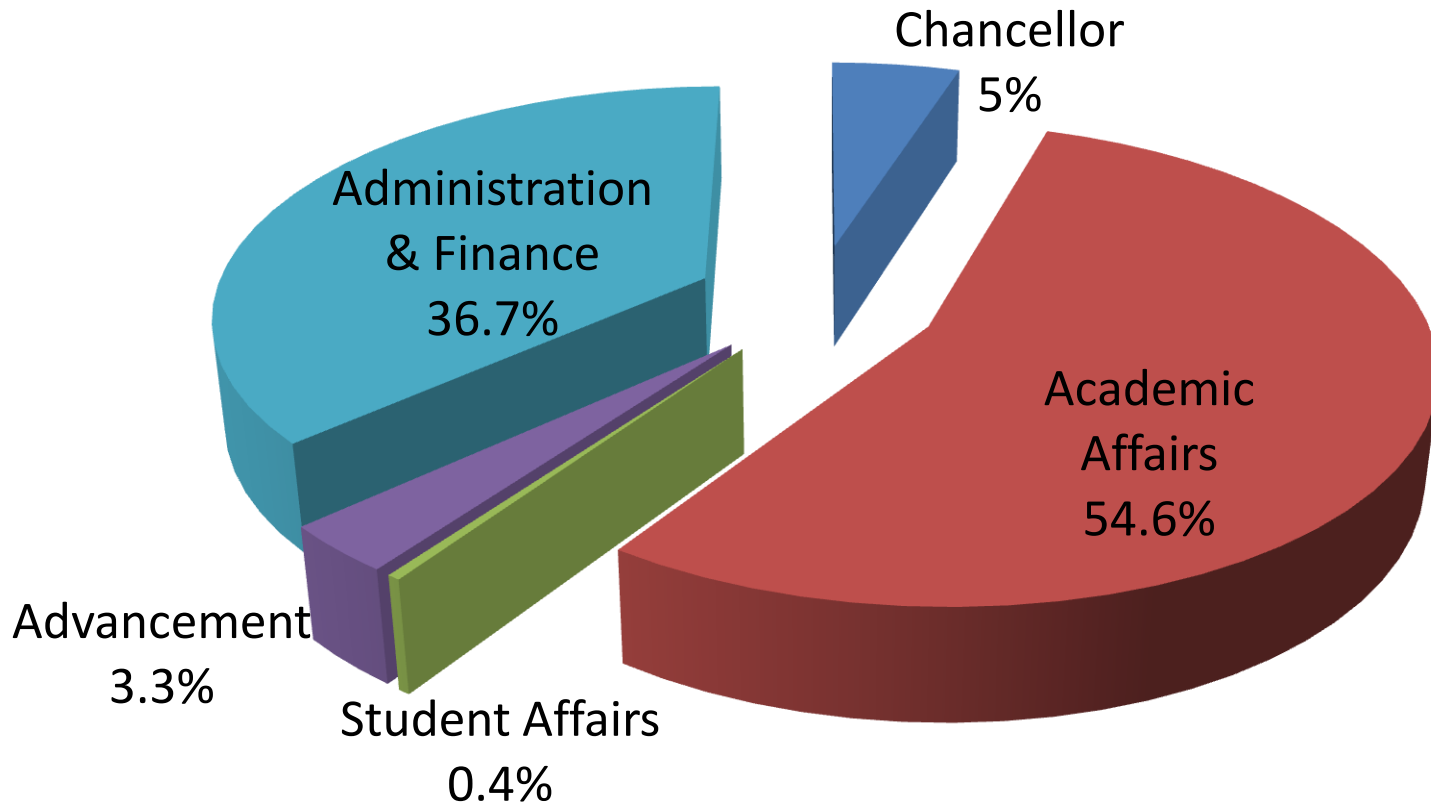
Budget by Division



2008-09	
PACE reduction	(803,882)
Management Flex reduction	(574,318)
Permanent Reductions	(1,378,200)
2% Reversion (Sept-08)	\$ (1,851,162)
1% reversion (Oct-08)	\$ (925,581)
1% reversion (Nov-08)	\$ (925,581)
1% reversion	\$ (925,881)
tuition shortfall FY09	\$ (350,000)
2% Reversion (Jan-09)	\$ (1,851,762)
Temporary reductions	(6,829,967)
	(8,208,167)

FY 2008-09

Reduction by Division



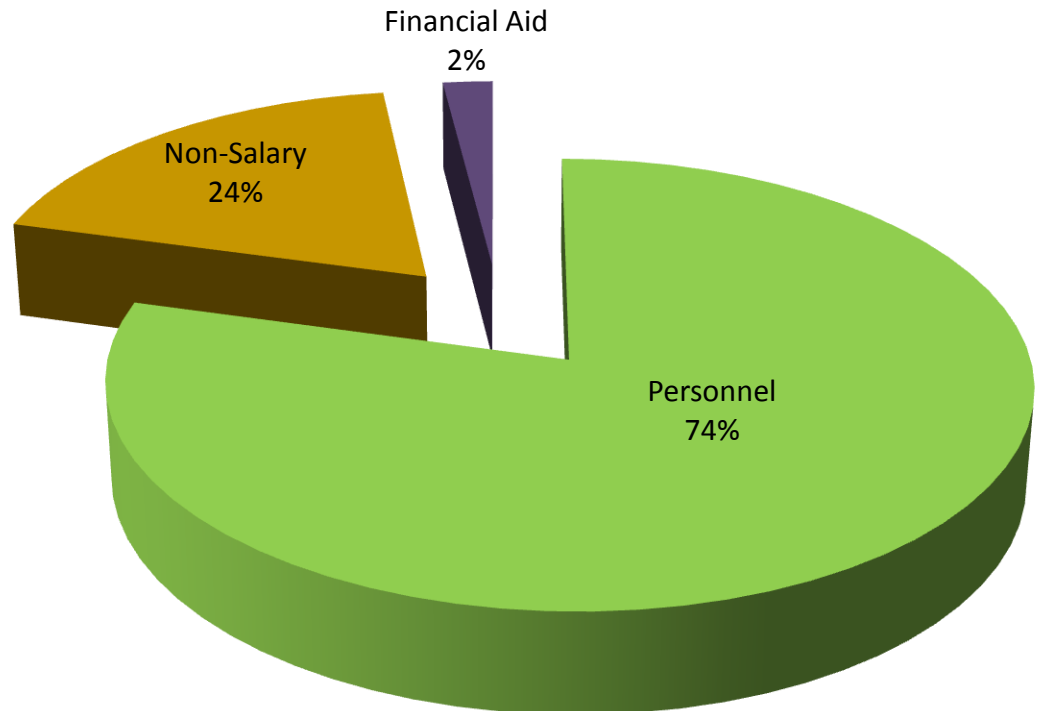
Western Carolina University
FY 2009-10 State Appropriated Budget
Expenditures as percentage of total requirements

Requirements: \$118,002,754

Personnel: \$ 87,218,337

Non-Salary: \$ 28,416,303

Financial Aid: \$ 2,368,074

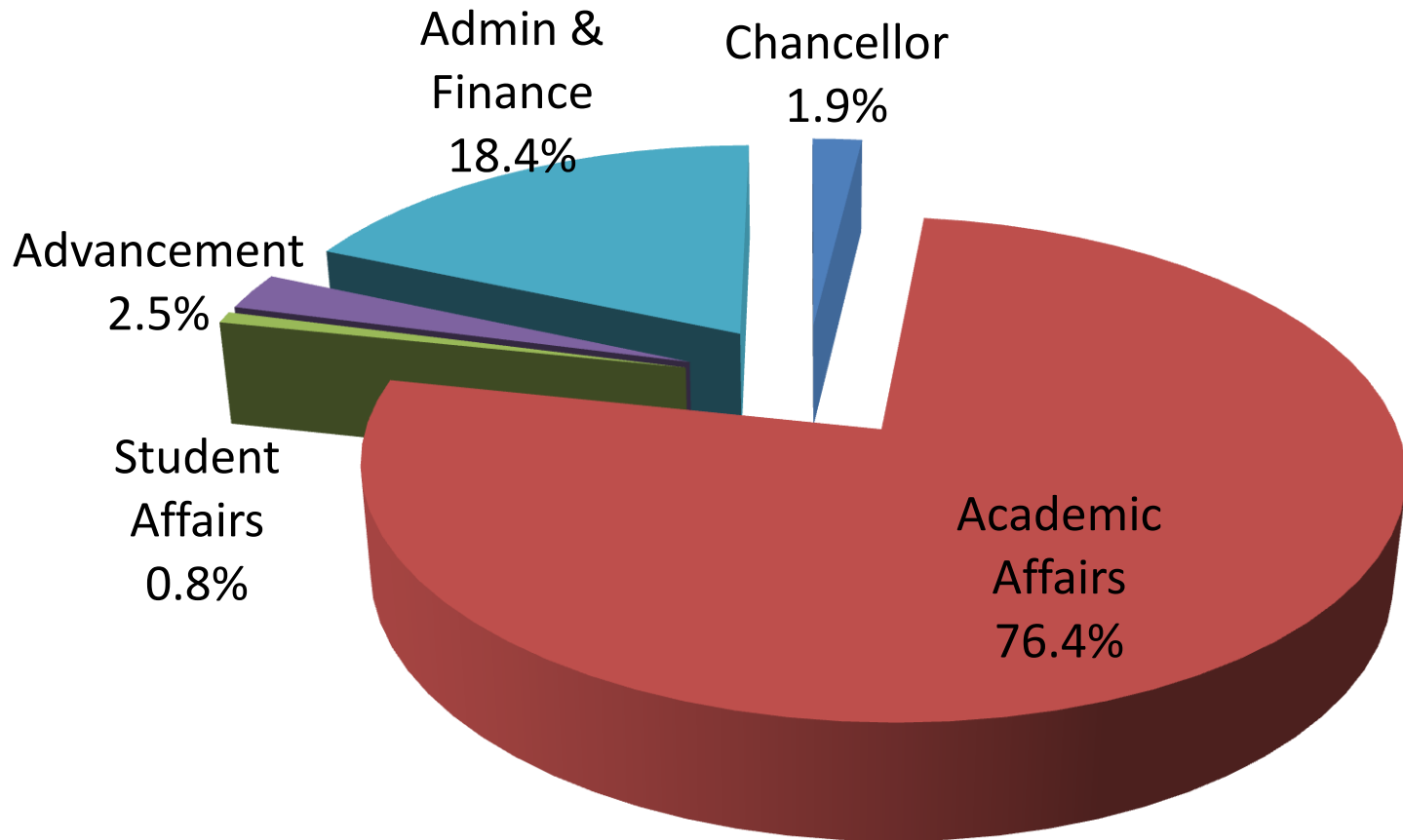


The University of North Carolina

Positions Reduced from State Funds for 2009-10 (Management Flex and Centers and Institutes)

	<u>FTE</u>	<u>RIF'd</u>	Moved to other fund <u>Source</u>	<u>Vacant</u>
SAAO & Middle Management Positions	10.4	3.1	-	7.3
Other Administrative Positions	24.5	10.0	0.5	14.0
Total - WCU Administrative Positions	34.9	13.1	0.5	21.3

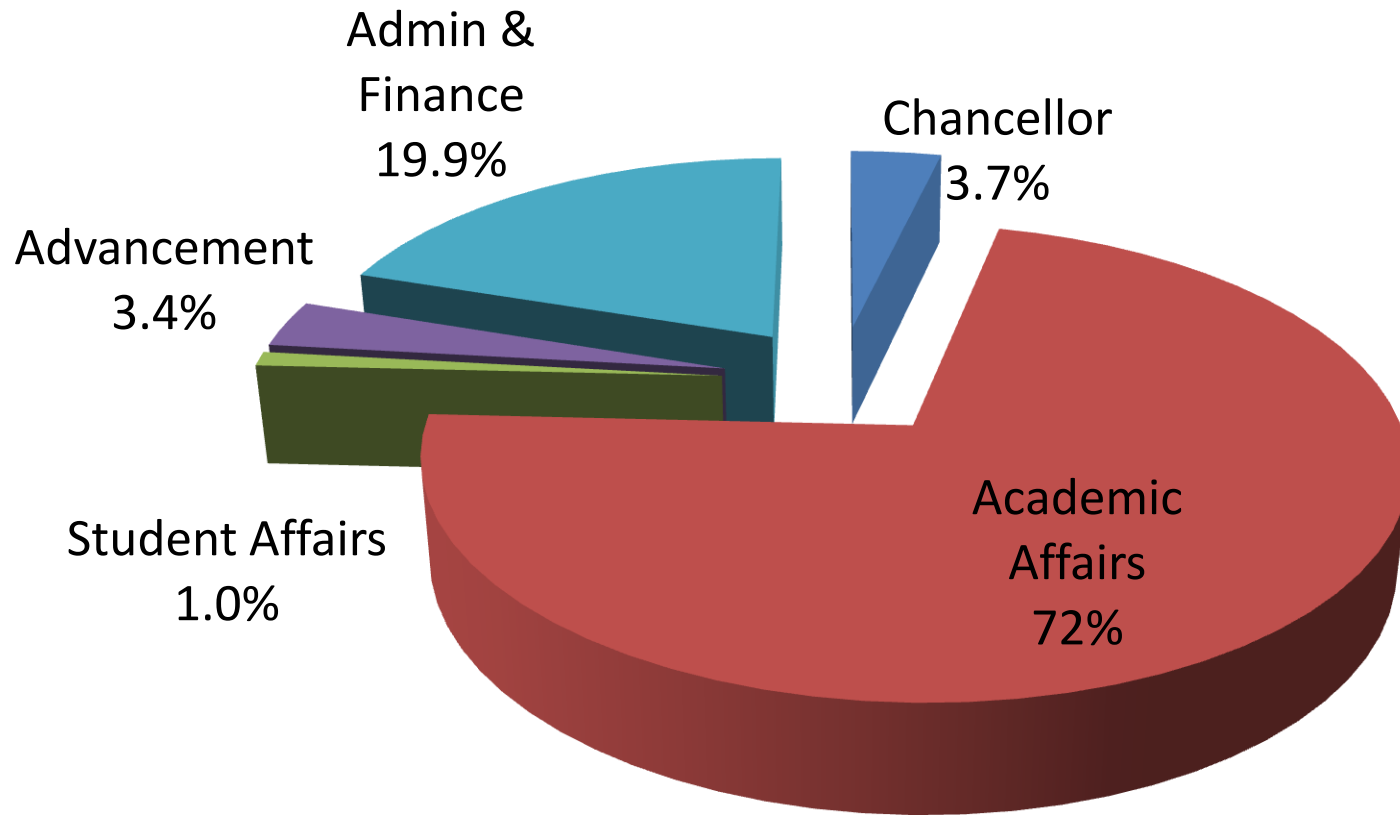
FY 2009-10 Budget by Division



2009-10	
Legislators School	(250,000)
Centers & Institutes	(967,506)
Management Flex reduction	(1,715,896)
Permanent Reductions	(2,933,402)
5% reversion	(4,382,913)
Temporary reductions	(4,382,913)
	(7,316,315)

FY 2009-10

Reduction by Division



Reductions taken over the last 2 years

FY 2008-09 Reductions	\$8,208,167
FY 2009-10 Reductions	\$7,316,315
Reductions taken	\$15,524,482