

*Emergency  
and Disaster  
Management  
(EDM)*

*WCU Has  
Residential  
and  
Distance  
Programs  
in EDM*

*WELCOME,  
WELCOME,  
WELCOME...*

*TO EMERGENCY  
AND DISASTER  
MANAGEMENT  
PROGRAM  
OVERVIEW FOR  
**RESIDENTIAL**  
MAJORS WITH  
HIGHLIGHTS FOR  
**ONLINE**  
**STUDENTS***



*Information from the  
Emergency and  
Disaster Management  
Program Director for  
those interested in the  
EDM Program.*

*DEAR STUDENTS, MY NAME IS  
DR. LISA BRIGGS, DIRECTOR OF  
THE EMERGENCY AND  
DISASTER MANAGEMENT  
PROGRAMS (ONLINE AND  
RESIDENTIAL)*

*I HAVE PUT THIS POWER POINT  
TOGETHER TO ASSIST YOU IN  
BECOMING FAMILIAR WITH  
OUR CURRICULUM AND OTHER  
IMPORTANT INFORMATION.*

## ELIMINATING CONFUSION

There are two EDM programs at WCU,

- 1, The face to face residential program
- 2, The distance learning online program

This means do not try to take section 50/51 courses if you are a residential student. Those are for those students in the distance education program.

These programs are completely separate.

For now, residential students do not take “seats” in the distance learning (online) courses.

The one exception to this is SUMMER TERMS when we will be offering RESIDENTIAL SUMMER COURSES in EDM **online**. They are still coded as *residential courses, just offered online*. (not the Distance Education program).

Again, you are welcome to take EDM online courses in the summer, but they are not offered in fall or spring semesters.

*DISTANCE  
EDUCATION*

VS.

*RESIDENTIAL*



## *SPECIAL NOTE:*

*THIS PRESENTATION IS DESIGNED FOR **RESIDENTIAL MAJORS** BUT **SIDE NOTES** WILL BE HIGHLIGHTED WHEN HELPFUL FOR **DISTANCE EDUCATION STUDENTS** AS WELL.*

*PLEASE NOTE, THAT THE CURRICULUM IS **EXACTLY THE SAME** FOR ONLINE STUDENTS AS IT IS FOR RESIDENTIAL STUDENTS. THIS POWER POINT CAN BE USED TO VIEW THE CURRICULUM.*

*IF YOU INTEND TO BE AN ONLINE STUDENT AND COMPLETE YOUR DEGREE VIA DISTANCE EDUCATION MAKE SURE THE UNIVERSITY HAS YOU SLOTTED AS SUCH. CONTACTING ADMISSIONS AND THE DISTANCE EDUCATION PROGRAM ARE IMPORTANT STEPS FOR YOU.*

*ALSO, BE SURE TO REGISTER FOR ONLINE COURSES AND NOT FACE TO FACE. THESE COURSES ARE TYPICALLY CODED AS SECTION 50 AND 51.*

*REGISTERING FOR FACE TO FACE COURSES WHEN YOU INTEND ON THEM BEING OFFERED ONLINE WILL CAUSE PROBLEMS SO PLEASE BE MINDFUL OF THIS.*

*It is very important to apply and register for your intended mode of course delivery.*

*Residential Students will only be able to register for residential based course sections except in the summers.*

# *Distance Education Students*

*You are also  
welcome to  
contact your  
advisor or  
me... and  
email is the  
best method  
to reach us.*

---

\*We do ask that you review all of our information that we have pulled together for you first, and then ask us specific questions.

Also, pretty much any question can be searched for on the WCU home page in the top right corner under the magnifying glass icon.

[WCU HOMEPAGE](#)

Aaron Vassey: Distance Education  
EDM Student Advisor  
[pavassey@email.wcu.edu](mailto:pavassey@email.wcu.edu)

Dr. Lisa Briggs: Director  
[lbriggs@wcu.edu](mailto:lbriggs@wcu.edu)

*Academic Advisor in EDM for Online Students... Mr. Aaron Vassey*



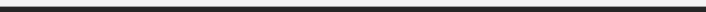
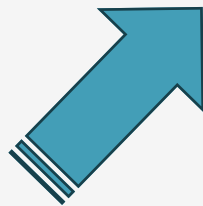
[pavassey@email.wcu.edu](mailto:pavassey@email.wcu.edu)

The best way to get in touch with your advisor is to email him at the link above.



*For those  
wishing to  
complete  
their degree  
online...  
see this  
link....*

<https://www.wcu.edu/apply/distance-online-programs/faq-for-distance-learning.aspx>





*DISTANCE EDUCATION VARY FROM THE TYPICAL RESIDENTIAL FRESHMEN IN THE FOLLOWING WAY.*

- 1. FOR ADMISSION TO THE DISTANCE EDM PROGRAM STUDENTS MUST HAVE EITHER AN A.A.; A.S.; A.A.S.; OR SUBSTANTIAL PROGRESS TOWARDS LIBERAL STUDIES.*
- 2. MOST STUDENTS ARE CAREER PROFESSIONALS, PLACE BOUND, AND TAKE COURSES PART-TIME*
- 3. THE DISTANCE COURSES ARE 8 WEEKS INTENSIVE SO AS TO HELP EXPEDITE DEGREE ACCOMPLISHMENT*
- 4. STUDENTS ARE HIGHLY ENCOURAGED TO AVOID TRYING TO CARRY A HEAVY COURSE LOAD AND WORK FULL TIME.*

**\*8 week courses does not equate to half of the work of typical 16 week courses. Be prepared for heavy work loads.**

*Note: while the courses are just 8 weeks the work load is double that of a 16 week course. \*8 week courses does not equate to half of the work of typical 16 week courses. Be prepared for heavy work loads.*

*Note, **online students** will need to declare that mode of curriculum delivery with WCU Admissions and Education Outreach*

- Contact Mr. Tony Miller if you wish to be a distance education student.
- [agmiller@email.wcu.edu](mailto:agmiller@email.wcu.edu)
- If you wish to be an online student (completing your degree completely online), your advisor will be Mr. Aaron Vassey. You can contact him via email with any questions.
- [pavassey@email.wcu.edu](mailto:pavassey@email.wcu.edu)

# *Residential EDM Students*

*You will  
have an  
advisor from  
the  
university  
advising  
center upon  
your arrival*

---

Then you will be assigned an EDM faculty advisor after 45 hours of course work (liberal studies) has been completed.

You are encouraged however to drop by and meet your EDM faculty right away. We are eager to meet you.

If you are just considering coming to WCU, here is a helpful link.



*For Residential Students...*

## *DECLARING EMERGENCY AND DISASTER MANAGEMENT AS YOUR MAJOR*



*MANY FRESHMEN COME INTO THE PROGRAM ALREADY DECLARED AS AN EDM MAJOR;  
\*OFTEN DONE AT TIME OF ADMISSIONS*

*IF YOU ARE DECLARED, YOU CAN SEE WHO YOUR EDM ADVISOR IS BY LOOKING ON YOUR DEGREE AUDIT/ EVALUATION*

*YOU WILL HAVE AN ADVISOR FROM THE ADVISING CENTER INITIALLY WHO WILL GUIDE YOU THROUGH LIBERAL STUDIES YOUR FIRST TWO YEARS, THEN YOU WILL HAVE AN EDM FACULTY ADVISOR TAKE OVER FROM THERE.*

*YOU CAN GENERATE YOUR DEGREE AUDIT VIA MYWCU (SEE LINK BELOW)*

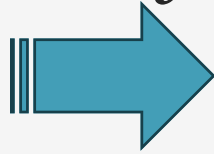
*IF YOU DO NOT HAVE AN ASSIGNED EDM ADVISOR-PLEASE CONTACT:*

*[CBRYSON@EMAIL.WCU.EDU](mailto:CBRYSON@EMAIL.WCU.EDU)*

*IF YOU WISH TO CHANGE A MAJOR ONCE A STUDENT AT WCU, YOU CAN DO SO BY ONE OF TWO WAYS....*

*[https://www.wcu.edu/files/distance-online-programs/How\\_Do\\_I\\_Declare\\_Audit.pdf](https://www.wcu.edu/files/distance-online-programs/How_Do_I_Declare_Audit.pdf)*

*Once You Are Accepted to University...*



*How to Run a Degree Audit That Shows What Classes You Need to Take.*

**Log in to your myWCU account to get started – my.wcu.edu**

Look for this box and click "Student Profile"

This is what should pull up, but all the black boxes will have your information in them.

© 2019-2022 Educan Company L.P. and its affiliates. All rights reserved.

Edited January 2023

*Residential Freshmen and Sophomores will have assistance from the Advising Center in creating their schedules (up to 45 hours).*

*\*After that, you are **required** to meet with your EDM advisor on the **official Advising Day**.*

*\*Your advisor will provide your registration pin and approve your schedule.*

*You must bring your degree evaluation and tentative schedule to your advising session.*

*\*It is important for you to take all the EDM courses as they are offered or you will not graduate in 8 semesters.*

# *HOW TO REGISTER FOR CLASSES*



# HOW TO REGISTER FOR CLASSES

[https://www.wcu.edu/registrar/pdf/how\\_to\\_register\\_for\\_a\\_class.pdf](https://www.wcu.edu/registrar/pdf/how_to_register_for_a_class.pdf) -  
[search=How%20to%20register%20for%20classes](https://www.wcu.edu/registrar/pdf/how_to_register_for_a_class.pdf?search=How%20to%20register%20for%20classes)

*After your schedule has been approved by your EDM Advisor, you can go to this link to register for courses. Be sure to preselect "Emergency and Disaster Management."*

*Note the difference between distance (online) courses and residential courses.*


*Residential students: Do not try to register for sections 50 or 51 if you are residential.*

*There are also Criminal Justice courses that can apply to EDM!*

*Check those out..*

# *Some things to know*

---

- Students can only “double dip” with the Upper-Level perspective requirement in Liberal Studies
  - Apply for graduation online one semester prior to graduation.
  - Students are responsible for filing their application to graduate on-time and it is **your** responsibility to make sure all of your requirements have been met and your GPA is sufficient for graduation.
  - Use your audit as a guide. Make sure all requirements are met.
  - Be in control of your own education!
- 

# *Graduation Requirements*

*A MINIMAL OF 120 TOTAL CREDIT HOURS REQUIRED (NO EXCEPTIONS!)*

*AT LEAST A 2.0 GPA IS REQUIRED IN ORDER TO GRADUATE FROM WCU.*

*42 HOURS OF LIBERAL STUDIES CREDITS ARE REQUIRED*

*48 HOURS OF EDM ARE REQUIRED*

*30 HOURS OF  
GENERAL ELECTIVES CREDITS ARE REQUIRED  
(WE STRONGLY ENCOURAGE YOU TO USE THESE CREDITS TOWARDS  
A MINOR OR SECOND MAJOR)*

*STUDENTS WHO DOUBLE MAJOR ARE AWARDED TWO DEGREES*

---

# *Finish in Four Initiatives*

After 60% of the semester has passed, students cannot withdraw and WILL get a grade

Students may withdraw from a maximum of 16 hours – after that, a withdrawal will result in an F

If you intend to withdraw from a course, pay attention to deadlines and make sure you actually withdraw (officially)

---

Grade replacement: Students may repeat a maximum of 16 credit hours and while only the most recent grade will be factored into GPA, all attempts will show on transcript. Replacing a grade does NOT result in additional hours being added.

Academic Standing: Students are required to successfully complete at least 67% of their attempted semester hours



# *ATTENTION TRANSFER STUDENTS!!*

*At least 25% of your college  
courses **MUST** be 300 or 400 level  
courses from WCU.*

*At least 50% (25 hours) of your  
EDM major credits must be  
earned at WCU.*

*Transfer students will likely have  
more than the minimal 120  
overall hours*

---

# *EDM Curriculum*

Required Major Core  
Courses (9 credit hours)

Required Specialty Area  
Courses  
(39 credit hours)

There are 4 specialty areas  
that you will choose  
courses from





We recently  
added 14 new  
EDM courses

We have  
revamped the  
curriculum

We have  
included  
interdisciplinary  
course options

We have  
partnered with  
Criminal Justice  
to offer a useful  
double major

# *Exciting Curriculum*

## Emergency and Disaster Management Course Numbers and Titles

EDM 250 Introduction to Emergency and Disaster Management (required)  
EDM 260 Research Methods in Emergency and Disaster Management (required)  
EDM 320 Statistical Analysis in Emergency and Disaster Management (required)  
EDM 322 Social Dimensions of Disaster  
EDM 324: Emergency Planning  
EDM 326 Risk Assessment and Vulnerability Analysis  
EDM 332 Disaster Response Operations and Management  
EDM 335: Principles of Hazard Mitigation  
EDM 340: Political and Policy Basis of Emergency and Disaster Management  
EDM 341: Debris/Waste Management and Emergency and Disaster Management  
EDM 343: Fire Services and Emergency and Disaster Management  
EDM 345: Weather and Disaster  
EDM 348: Recovering from Disaster  
EDM 349: Humanitarian Response and Disaster Relief  
EDM 350: Cyber Terrorism  
EDM 351: Resource Management  
EDM 352: Disaster and Crime  
EDM 355: Stress, Personal Welfare and Emergency and Disaster Management  
EDM 356: International Disaster and Catastrophe  
EDM 358: Vulnerable Populations and Emergency and Disaster Management  
EDM 360 Asset Protection & Critical Infrastructure  
EDM 365 Riots, Civil Unrest and Crowd Control  
EDM 370: Communication, Media and Emergency and Disaster Management  
EDM 375: Biothreat and Emergency and Disaster Management  
EDM 400: Missing Persons and Search and Rescue  
EDM 405 GIS and Emergency Mapping  
EDM 406 Incident Management Systems  
EDM 410: Unmanned Aircraft Systems and Emergency and Disaster Management  
EDM 435 Homeland Security  
EDM 448 Emergency Exercise Design and Evaluation  
EDM 452: Legal Issues in Emergency and Disaster Management  
EDM 453: Agriculture, Farm and Disaster  
EDM 457: Terrorism  
EDM 458: Grant Writing in Emergency and Disaster Management  
EDM 460: Case Studies in Emergency and Disaster Management  
EDM 495: Senior Seminar in Emergency and Disaster Management  
EDM 480: Independent Study in Emergency and Disaster Management  
EDM 483: Internship in Emergency and Disaster Management  
EDM 493: Topics in Emergency and Disaster Management

• eex

*EXCITING  
NEW  
COURSES!*

## Emergency and Disaster Management Program (EDM)

Updated version, 2020

Degree Requirements: Minimal of 120 hours to obtain Bachelor of Science Degree.

Of those 120 hours, include the following.

- \*42 hours of liberal studies (waived by community college A.A. or A.S. degrees, \*not waived with A.A.S degree).
- \*48 hours minimal of EDM course work (required EDM core courses and EDM area concentrations courses).
- \*30 hours elective credit (including a minor, double major, internship, or any other EDM courses not being used to satisfy the EDM requirements).

*What is  
Required for  
the Degree?*

---

EDM Required Core  
Courses Are...



\*EDM 250  
Introduction to  
Emergency and  
Disaster Management  
(\*required pre-req.)



EDM 260 Research  
Methods in Emergency  
and Disaster  
Management



EDM 495 Senior  
Seminar in Emergency  
and Disaster  
Management

*What is  
Required  
for the  
Degree?*

**EDM Required “Area  
of Concentration”  
Courses:**



**EDM Specialty Areas  
1, 2, 3, and 4: Courses  
Required in Each Area  
(39 Hours Required)**

*What is  
Required  
for the  
Degree?*

# AREA OF CONCENTRATIONS....39 HOURS TOTAL

Area One: Conceptual/Technical Take Three of the following (9 hours)	Area Two: Social/Political Take three of the following (9 hours)	Area Three: Experiential/Interdisciplinary Take two of the following (6 hours)	Area Four: Free Choice Among EDM Electives Take five of the following (15 hours)
EDM 324: Emergency Planning	EDM 322: Social Dimensions of Disaster	EDM 483: Internship in Emergency and Disaster Management *Must have Director approval	Choose EDM courses not otherwise being used to satisfy requirements from areas 1, 2, 3 (internships, research studies, 493s, and ALL EDM electives qualify).
EDM 326: Risk Assessment and Vulnerability Analysis	EDM 340: Political and Policy Basis of Emergency and Disaster Management	EDM 480: Independent Study in Emergency and Disaster Management *Must have Instructor approval	Up to 15 hours of transfer credit can be applied to this category as EDM 19a or EDM 39a credit.
EDM 332: Disaster Response Operations and Management	EDM 348: Recovering from Disaster	EDM 320: Statistical Analysis in Emergency and Disaster Management	
EDM 335: Principles of Hazard Mitigation	EDM 349: Humanitarian Response and Disaster Relief	EDM 458: Grant Writing in Emergency and Disaster Management	
EDM 341: Debris/Waste Management and Emergency and Disaster Management	EDM 352: Disaster and Crime	CJ 150: Introduction to Criminal Justice	
EDM 343: Fire Services and Emergency and Disaster Management	EDM 355: Stress, Personal Welfare and Emergency and Disaster Management	CJ 204: Criminal Law	
EDM 345: Weather and Disaster	EDM 356: International Disaster and Catastrophe	CJ 370: Ethicso	
EDM 350: Cyber Terrorism	EDM 358: Vulnerable Populations and Emergency and Disaster Management	EMC 445: EMC Systems Mgn.	
EDM 351: Resource Management	EDM 365: Riots, Civil Unrest and Crowd Control	PSC 327: State and Local Government PSC 322: Public Administration	
EDM 360: Asset Protection & Critical Infrastructure	EDM 370: Communication, Media, and Emergency and Disaster Management	Comm 400: Crisis Communication	
EDM 375: Biothreat and Emergency and Disaster Management	EDM 452: Legal Issues in Emergency and Disaster Management	Anthro 300: Forensic Osteology	
EDM 400: Missing Persons and Search and Rescue	EDM 453: Agriculture, Farm and Disaster		
EDM 405: GIS and Emergency Mapping	EDM 460: Case Studies in Emergency and Disaster Management		
EDM 406: Incident Management Systems			
EDM 410: Unmanned Aircraft Systems and Emergency and Disaster Management			



**1<sup>st</sup> Semester-Freshman Year**

First Year Seminar – 3 hours  
C1 English 101- 3 hours  
C2 Math- 3 hours  
C3 Comm 201-3 hours  
General Elective/or minor – 3 hours

**Semester Total: 15 hours**

**1st Semester-Sophomore Year**

C1 English 102- 3 hours  
P1 Social Science- 3 hours  
C5 Physical & Biological Sciences- 3 hours  
P4 Humanities -3 hours  
EDM 250/Intro-3 hours

**Semester Total: 15 hours**

**1<sup>st</sup> Semester-Junior Year**

EDM Area One-3 hours  
EDM Area One- 3 hours  
EDM Area Two- 3 hours  
General Elective/minor-3 hours  
General Elective/\*Upper Level Pspt – 3 hours

**Semester Total: 15 hours**

**1<sup>st</sup> Semester-Senior Year**

EDM Two - 3 hours  
EDM Four- 3 hours  
EDM Four- 3 hours  
General Elective/minor-3 hours  
General Elective/minor-3 hours

**Semester Total: 15 hours**

**2nd Semester-Freshman Year**

P1 Social Science- 3 hours  
C4 Health or HSCC- 3 hours  
C5 Physical & Biological Sciences- 3 hours  
P3 History-3 hours  
General Elective/or minor – 3 hours

**Semester Total: 15 hours**

**2nd Semester-Sophomore Year**

P5 Fine/Performing Arts- 3 hours  
P6 World Cultures -3 hours  
EDM 260/Research Methods-3 hours  
General Elective/minor-3 hours  
General Elective/minor – 3 hours

**Semester Total: 15 hours**

**2nd Semester-Junior Year**

EDM Area One- 3 hours  
EDM Area Two- 3 hours  
EDM Area Three- 3 hours  
EDM Area Three- 3 hours  
General Elective/minor-3 hours

**Semester Total: 15 hours**

**2nd Semester-Senior Year**

EDM Area Four- 3 hours  
EDM Area Four- 3 hours  
EDM Area Four- 3 hours  
EDM 495/Senior Capstone- 3 hours  
General Elective/minor-3 hours

**Semester Total: 15 hours**

***RESIDENTIAL EDM MAJOR***

***EIGHT SEMESTER PLAN  
FOR EMERGENCY AND  
DISASTER MANAGEMENT:***

***REQUIREMENTS:***

***LIBERAL STUDIES:  
42 CREDIT HOURS***

***EDM COURSES:  
48 CREDIT HOURS***

***GENERAL ELECTIVES:  
30 CREDIT HOURS***

***TOTAL HOURS FOR EDM  
B.S. DEGREE IS 120***

*Information  
for single  
majors of  
either EDM  
or CJ  
for the  
residential  
program  
only*


---

- If a student is a CJ major, they can take 9 hours of EDM elective credit to satisfy category 4 requirements in CJ elective area.
- See the degree audit for EDM course options. Again sections 50 and 51 are for those students in the distance program.
- If a student is an EDM major, they can take 9 hours of CJ (intro, ethics, and criminal law) to satisfy area three in the EDM curriculum.

# *Information for Double Majors with CJ and EDM*

## *Residential only*

---

- If a student chooses to double major in CJ and EDM, up to 6 classes can be taken to satisfy requirements in both majors. For example, if a student is a double major and they take CJ 280 "research methods," it will satisfy the research methods *requirement* in EDM. This does not however equate to 6 hours of credit (for only a three hour class). There has been confusion on this. The requirement can be satisfied, but continue to pay attention to total hours.
  - This "cross count" ONLY applies if a student is a DOUBLE major with CJ.
  - \*Please note, the possibility may exist that your advisor may have to make manual entries to the degree audit.
- 

# *Minor in EDM*

---

REQUIRED COURSE WORK FOR EDM MINOR.



EDM 250 INTRODUCTION TO EMERGENCY AND DISASTER MANAGEMENT



AND



15 HOURS OF 'EDM' COURSES

An EDM minor requires all 18 hours to be EDM courses (the prefix must be EDM)

***EDM  
Internships  
Must be  
approved  
prior to  
registering***

Internships in Emergency and Disaster Management are highly encouraged, Regina Cline is the new EDM and CJ Internship Coordinator. ALL internships MUST be preapproved. Do not register for an internship unless prior approval has been granted.

[rccline@email.wcu.edu](mailto:rccline@email.wcu.edu)

We encourage you to participate in an internship, and the most appropriate time is the summer between your junior and senior year.


You may not participate at a department where you currently work or volunteer- or where an immediate relative is employed.

In addition to being approved for an internship, if you intend to earn more than three credit hours credit, you must be preapproved and you must register for multiple sections of EDM 483.

*CJ offers a minor which is 21 hours that would count in your general elective category.*

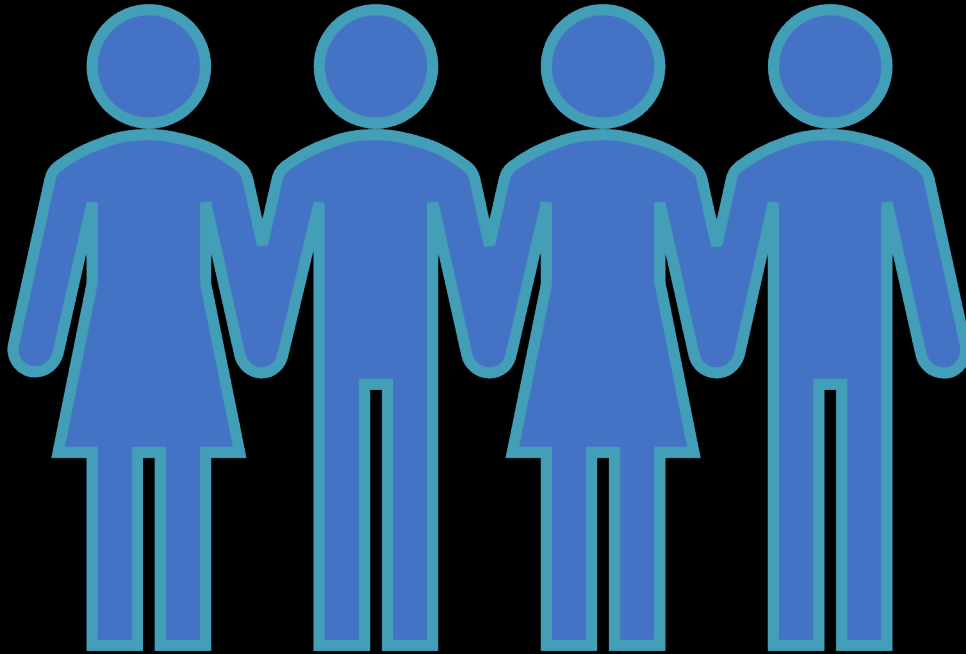
---

<https://www.wcu.edu/learn/departments-schools-colleges/cas/social-sciences/crimcj/>





# *EDM Student Association*




- Check it out, put it on your resume, become an officer, participate in activities such as Community Emergency Response Team (CERT) Training and Certification
- Volunteer Opportunities for Disaster Relief
- Work with your faculty on special research and “boots on the ground” experience

Please see Michael Mazarky for more [information](#).

[mmazarky@email.wcu.edu](mailto:mmazarky@email.wcu.edu)

---

# *A Bit on Transfer Credit!*

- It is important to understand how transfer credit works.
  - WCU does a great job of accepting transfer credit but often there is confusion on where the transfer credit goes once it is transferred into WCU.
  - Simply stated here, I think students get confused about where their community college credit gets allocated (to liberal studies, to the major, or to general electives). All three of these are required in order to receive a 4 year degree- so as long as the credit is awarded to some category -the credit counts.
  - Another confusion is in the type of degree being transferred. Be sure to review the difference between A.A. / A.S. Degrees and A.A.S Degrees for example. The A.A.S for example is considered a terminal degree at the community colleges.
  - A.A. (Associates of Arts)
  - A.S. (Associates of Science)
  - A.A.S (Associates of Applied Science)
- 
- 

# *Transfer Credit...*

*Know what  
degree you  
are trying to  
transfer and  
how  
articulation  
varies*

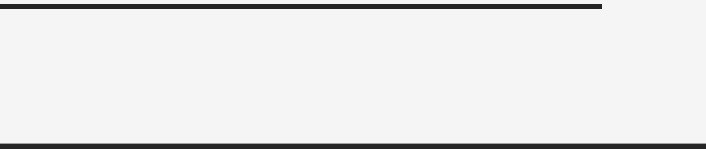
---

---

- Note again that the Associates of Arts (A.A) and the Associates of Science (A.S.) can waive all of the liberal studies requirements at WCU.
- The Associates of Applied Science (A.A.S) is viewed as a terminal degree at the community college and while courses DO transfer, this degree does NOT waive liberal studies requirements.
- Students who know they want to transfer to a four year university such as WCU EDM program are advised to obtain one of the first two degrees listed above if they desire to have liberal studies completed prior to admissions.
- All of the EDM courses that a student needs will be offered through WCU online.  
Or residually depending on the program one is in...

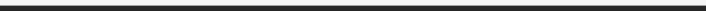
# *Transfer Credit...*

- We accept transfer credit and have many articulation agreements already in place with NC community colleges.
- Only courses with a C or better average will transfer.
- Up to 15 hours (18 if the EDM Introduction course is transferred) of transfer credit can be applied and satisfy one whole specialty area in the WCU EDM curriculum (area 4).
- Transfer credit will come in as EDM elective credit 19a or 39a credits.
- Allow transfer courses to come in as EDM general electives allows for students to move expediently through the program and not wait for a course to be offered online that they need.
- Remaining transfer credit will satisfy either liberal studies or the needed 30 hours of general electives.



# *Transfer Credit...*

- It is the student's responsibility to make sure that they request formal transcripts to be sent to the registrar's office for articulation.
- Verification that transcripts have been sent and received is important.
- WCU EDM does not accept training credits in lieu of course requirements.
- WCU EDM does not have a way to count life experience as academic credit.





*WE ARE EXCITED TO HAVE YOU IN  
OUR PROGRAM!*

---